



*Your
resource
for
everything
local*

February 2022
Issue 402

Quartet

The Parish Magazine

For Higham, Stratford St Mary, Raydon and Holton St Mary



We have a nine Demijohns
(6 clear and 3 brown) if
anyone can use 1 or more
of them. No charge

Chris Haste 01473 311615

For sale

Men's 3/4 length sheep skin coat.
Colour beige. Size L - XL. 84 cms collar to hem, 65
cms sleeve length, 48 cms chest, 2 front pockets.
£45 o.v.n.o. (East Bergholt)

01206 298192

R/H half set of golf clubs to sell.

Ideal for teenager or adult starting to
play.

Comes with golf bag.

£20.00 or any sensible offers

Contact Dave 07930390517



Help us with our campaign!

If you know any merchant or service provider living
in one of our four villages, please let us know by
emailing quarteteditor@hotmail.co.uk. We will
contact them and see if they would like a **free**
listing in the Quartet

Small Ads Pin Board

No charge for non-commercial ads placed for one month only,
space permitting. Email quarteteditor@hotmail.co.uk

Quartet Diary

Details of events can be found within the
magazine.

February 2022

- 2 Raydon Club
- 4 FFOTMLC - Holton
Social Club Holton
- 5 Green Gym Holton
- 8 Raydon Parish Council meeting
- 9 Raydon Club
- 11 Social Club Holton
- 16 Raydon Club
- 17 Slow Stitch Holton
- 18 Social Club Holton
- 22 Raydon Fair Trade Coffee
Morning
- 23 Raydon Pavillion coffee morning
Raydon Club
SSM Coffee Morning
- 24 R&DCG Meeting
- 25 Social Club Holton

March

- 2 Raydon Club
- 4 FFOTMLC - Holton
Social Club Holton
- 5 Green Gym

- 9 HSM Parish Council Meeting
Raydon Club
- 11 Social Club Holton
- 14 SSM Parish Council Meeting
- 16 Raydon Club
- 17 Slow Stitch Holton
- 18 Social Club Holton
- 22 Raydon Fair Trade Coffee
Morning
- 23 Raydon Pavillion Coffee Morning
Raydon Club
- 24 R&DCG Meeting
- 25 Social Club Holton
- 26 Mark Mitchels' talk, Raydon
- 30 Raydon Club

April

- 1 FFOTMLC - Holton
Social Club Holton
- 2 Green Gym
- 6 Raydon Club
- 8 Social Club Holton
- 8-10 Caravan Rally, SSM
- 9 R&DGC Spring Show (TBC)
- 13 HSM Annual Parish Meeting
Raydon Club

Editors Corner

We've gone a tiny bit doggy this month - I hope you like the picture on the front cover. The two dogs gracing our magazine this month are Dougie and Hazel. They are staying at SESAW, the small animal rescue Charity we often feature. If you would like to know more about them, turn to page 18.

There is another doggy article on the Higham page this month as we feature news from Headway Suffolk and their 'Neuro Conference' on Wednesday 11th May this year.

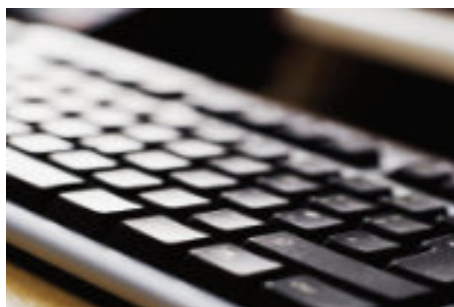
What are you going to do for the Jubilee Celebrations? Perhaps you were thinking a nice long weekend in June could come in handy! Stratford St Mary are looking for ideas already and I expect other villages will follow suit soon. If you have any good ideas, why not contact the Parish Clerk? Have a look at the article on page 8.

Talking of good ideas, the Quartet team have our AGM in the next few weeks. We often try and come up with new ideas to keep the magazine fresh and up to date. If you think of anything the Quartet could publish to enhance the lives of our readers you're more than welcome to email us with ideas!

Happy reading

Anne and Jane.

Articles for the Quartet are included if we have room, and if, in the opinion of the editors, they are of general interest to our readers. Please remember all articles will be subject to editing. We prefer you to contact us via email where possible.



Copy deadline for next edition:
19th February 2022

Contact details: Email:
quarteteditor@hotmail.co.uk

Editors:
Anne Priestley; 1 Corpus Christi
Cottages, Holton St Mary. CO7 6NN

Jane Lelliott; 5 Swan Meadow, Stratford
St Mary. CO7 6JQ

Distribution: Dave Leach
07930390517

Invoicing: Jenny Leach
quartet.advertising@gmail.com

Rev'd Manette Writes

Dear friends,

Some time ago I came across the following: "Welcome to the website of the church of Saint Edward the Previous Vicar." The church of St Edward the Previous Vicar is dedicated to the blessed memory of St Edward who was the previous vicar, in case you were wondering. St Edward was a paradigm of ecclesiastical virtue. The father of four beautiful, well-behaved children. His wife, St Mrs Edward, kept herself to herself, didn't have any airs or graces, and was content merely to lead the Sunday School, play the organ, bake cakes for the fetes, lead the Under 4s Tot's Group, the Mothers' Union and the Jam-making Circle.

St Edward the Previous Vicar was a man of enormous resources and talents. He was available to all members of the parish at all times. Including his day off - indeed, especially his day off. His sermons, although only four minutes long, were beautifully-researched pieces of theology, full of brilliant illustrations and amusing stories. He had a psychic ability to know exactly what church building maintenance was required - including an uncanny ability to leave the pews exactly where they are. He was dedicated to all the hymns written between 1871 and 1872 - allowing the organist to play nothing else. When St Edward the Previous Vicar was the vicar, the Parish Share was always easily paid, even when nobody gave any money in the collection. And the church was full. Completely full. People used to queue up. And there were hundreds of kids in the Sunday School. Hundreds.

The history of the name of the Church of St Edward the Previous Vicar is interesting. Until 2011, it was known as the Church of St Brian the Previous Vicar. St Brian was a holy man. So holy was the man that, by comparison with St Brian, the vicar at the time was, to be honest, a bit of a disappointment. History does not record the name of the vicar at the time that the church was dedicated to St Brian the Previous Vicar. But we can assume he probably wasn't very good."

Of course the above is tongue-in-cheek and doesn't apply to life in our lovely benefice at all. I have been here now for just over a year and all of this time was affected by Covid restrictions. I think it is safe to say that we are now beginning to be cautiously optimistic that things are looking up and that we will regain a greater degree of normality as we move into spring and summer. In all our four churches, many people are working very hard to help with the many practical tasks and jobs which are needed to keep a church running smoothly. This can only be achieved by a team of people working together and we can't do it without help.

Jesus said "My yoke is easy and my burden is light." If we share the jobs that need to be done, the load is so much lighter! We need your help and support if we want to continue serving God and our local parishes for generations to come.

Yours in Christ, Rev'd Manette

Stratford St Mary



In Stratford

Hall Farm Shop Cafe and Restaurant
www.hallfarmshop.com

The mobile pizza co - 07982 427483

ABC Preschool - 01206 322466

Kate Baines, Virtual Assistant - 07799 391343

Orwell Electrical - 01206 322969

Andy Smith Roofing - 01206 322882

Jackson Plumbing and Heating -
01206 322063

Nigel Bruce Electrician - 01206 322751

Penrose and Partners - Vets. 01206 323414

Finest Gardens - 07756 364560

John Burrell Bespoke Bedrooms -
07734700507

Nexus Creative Print Production -
gill@nexuscpp.co.uk

tim germain - furniture designer-
maker. www.germain.co.uk

Parish Room

At last we are open for business, subject to any government restrictions of course.

Please contact John Taylor on 01206 323908 for details and to book.

Coffee Morning

We have recommenced the monthly coffee mornings which take place on the fourth Wednesday of every month.

10.30 am in the Parish Room Do come along and socialise - £2.00pp. Money raised to date has contributed to the purchase of chairs and garden furniture for the Parish Room

The next meeting will be 23rd February.

STRATFORD ST MARY INSTITUTE HALL

Please note that requests should be made through the bookings email address: ssminstitute.bookings@gmail.com Information supplied to book should include a name with contact details and the nature of the event.

This results in a natural queuing system which ensures that first come is first served. I check this address every day and will respond accordingly.

Steve Kite
42 Strickmere
Stratford St Mary, CO7 6YG

SSM Parish Council Meetings

14 March

9 May

11 July

12 September

14 November

Stratford St Mary Parish Council Emergency Team

If an emergency does arise, please contact one of the following team members:

Norman Woodard

12 Swaynes 01206 323015
Norman.woodard@fatbloaters.com

Chris Griffin

Brook Farm, School Lane 01206
337363/07885 807567
chrisbrookfarm@gmail.com

Steve Kite

42 Strickmere 01206 322482
07958 515573

Bill Davies

3 Spanbies 01206 322990
billdav@hotmail.com

The current Emergency Team members are all over 70 years of age and, in the current climate, we would like to welcome younger village residents to join the team to assist anywhere in the village if called upon to help. If you feel you can be of use in any such emergency, please contact the parish clerk Mrs Jenny O'Hanlon on parishcouncil@stratfordstmary.org.uk

Stratford Chapel

Upper Street, Stratford St. Mary

Pastor: Mr. Adrian Gates

Youth and Children's Pastors: Jamie & Beckie Wyncoll

We are an independent mainstream Evangelical Church of around 60 people encompassing and providing for all age groups. We particularly specialise in the areas of Children's and Youth work, Bible Teaching and Evangelism.

Services and Groups:

Every Sunday:

10.30am Morning Worship and Junior Church

6.30pm Church Prayer Meeting

8.00pm Bible Teaching Group (currently on Zoom)

Monday: 8.00pm House Group (on Zoom)

Tuesday: 7.30pm Discipleship Group (at the Chapel)

8.00pm House Group (on Zoom)

Friday: 5.00pm "Sparks" Children's Club for ages 7 – 11 (at the Chapel)

7.30pm "Ignition" Youth Club for ages 12 – 16 (at the Chapel)

Other activities will be re-commenced shortly.

Web-site: stratfordstmarychapel.com

Enquiries: Children's & Youth: Jamie & Beckie (01206 323095) email: Beckie.w@live.com

General enquiries: Maggie Chapman (01473 311436)



NANCY ABLITT FUNERAL

Kevin and Lynn would like to thank everyone who attended their mother's funeral last month and apologise for being unable to speak to them due to COVID restrictions.



Jubilee celebrations

The Parish Council would like to invite all residents of Stratford St Mary to give us your ideas on how you would like our village to celebrate the Queen's 70th Jubilee this year.

Please contact the Clerk or a member of the Parish Council on parishcouncil@stratfordstmary.co.uk



Help

To enable the Parish Room to continue to be a valuable asset to the village, help is required to:

Take bookings, Keep the accounts
Minor Maintenance

Offers to take on one or more of these jobs would be very much appreciated.

Please contact Don Umfreville on 01206 322626



Want to grow your own fruit and veg?

Dedham Allotment Association has plots available from £13.00 pa.

(Stratford residents only)

For more information contact Diana.

email: dedhamaa@btinternet.com

Institute Hall Caravan Rallies

Caravan rallies will be held at the Institute Hall and grounds on the following dates:

8th to 10th April 2022 - South Essex Caravan and Motorhome Club.

14th to 18th April 2022 - 007 Caravan Club Easter Rally.



Stratford St Mary Primary School are collecting the 'Book for Schools' tokens which appear in the Ipswich Star and East Anglian Daily Times. Every participating school will win £100 worth of books. The school that collects the most will win £1,000 worth of books and two runner ups will win £500. If you have any tokens please drop them off at Stratford St Mary Primary School.

Thank you for your support.



Winners of SSM 100 Club

£50 Jill Claydon (No 21)

£10 S Davies (No 89)

A few places available in the 100 Club.

For just £1 per month be in with a chance of winning £50.

All surplus funds go towards the upkeep of the Institute Hall. Each member can hire the hall for free once a year.

Contact either Norman Woodard on Norman.woodard@fatbloaters.com or Phil Brown on philipbrown123@hotmail.co.uk for details



Dear Resident

Do you...

- ♣ *Want to help reduce the speed of vehicles within our community?*
- ♣ *Want to make our village a safer place to live?*
- ♣ *Have some spare time?*

Community Speed Watch makes a valuable contribution to road safety within our village and we are looking for additional volunteers to help make our village a safer place to live .

The police provide a level of reassurance and enforcement but officers cannot always carry out speed enforcement checks in every location that requires them.

So, if you are able to spare 1 or 2 hours per month of your time, why not get together with like-minded members of our community and provide a visible presence to help reduce speeding and use speed detection equipment to report speeding within our village,.

Interested in joining?

Please contact:

Bill Davies tel: 01206 322990

or email: billdav@hotmail.com

Church Maintenance latest update

We are continuing with our two major fund-raising projects to upgrade the lighting in the church with LED bulbs and to replace the pew cushions as the existing cushions are in a very poor and dilapidated condition. The replacement cushions will cost in the region of £2500 and the lighting £1300 plus VAT. As always, the PCC would be extremely grateful for any donations to help us meet the cost of these two projects. The cushions are on order and should arrive by the end of March, after which time we will genuinely be able to ask 'Are you sitting comfortably'!

Thank you

Sandy Ranson PCC Secretary



Can you help with flowers for the church?

Our parish church in Stratford has a small rota of people who kindly arrange or place a few flowers in the church on a regular monthly cycle, to ensure the church is inviting for visitors. No special floristry skills required! We now have some gaps in our annual rota and would very much like to welcome new volunteers to our small team. At the moment, we usually allocate a month to each person, but if this can be shared with someone else, it helps to spread the load. If you feel this is something you could help with, please contact Jonathan Dewey (churchwarden) or Sandy Ranson (PCC secretary) –for contact details see the Quartet centrefold pages).

We look forward to hearing from you!

Lunch Club at Raydon Pavillion

Thursday 13th January 2022

All went well for our first lunch event. It was well supported
Faith did a great lunch of beef stew and dumplings followed by trifle, then tea, coffee and some beautiful homemade cakes.

Our next Lunch - see below.

All welcome, come and join our friendly group for chats and friendship.



Invitation

Raydon and District Lunch Club

The Pavillion Raydon (on B1070).

Thursday February 10th 2022
12.30pm

We will be providing a two course lunch with tea and coffee and Raffle.
£4 per head

Call Jayne to book your place
Tel: 07887 767478

Higham



In Higham

Brett Valley installations - Oil boiler servicer - 01206 337316

HC Smith Builders - 07468 456772

Derek Allen Fresh Fish (Thursdays)
07967 755771

Rmk Chisnall - mower repairs 07557 771721

"She gave hope and joy to all she met"

She changed for the person she was working with to meet their needs, which goes far beyond any training I could give her.

"She will be sorely missed by not just me but everyone who had the privilege to know her."

Those are the heartfelt words of Sophie Wellum-Mayes, Brainy Dogs co-coordinator, as she paid



tribute to beloved Hope, the Cocker Spaniel-Labrador cross who sadly died at the age of nine in early November.

Hope became the flagship face of Headway's Suffolk's Brainy Dogs scheme shortly after it launched ten years ago and wowed clients and visitors with her clever skills and interactive personality.

As well as providing rehab for clients with walks, grooming and playing games, Hope also visited care homes and attended many events.

Sophie described her as "bomb proof" as she could trust Hope with any client and any situation without fail.

After Sophie was told the devastating news in August that Hope had cancer and only had a few months to live, she decided to introduce a new puppy, Wren, a Springer-Labrador cross, so she could begin training and learning from Hope as well as Bee.



As you can see, she's learned from the best and is a great asset to the Brainy Dogs project as she is coming on leaps and bounds in her early development! Hope was honoured at the Naturo SuperDog Awards ceremony where she had been nominated as a finalist in the worker category

Headway Suffolk 01473 712225

Raydon



In Raydon

Blackwell Barn Holiday Let -
www.cottages.com

Phil Avery Electrician 01473 311261

Ashley Short Carpentry 01473 311226

Gordon Short Decorator 01473 313053

SW Stiff Builders - 07811 005241

Earth&Turf Garden Services -
07922078241

DIY Livery - 07710 540926

Infusion Grill - 07584 573474

Swift Garden Services - 07947 322429

Rheal Coatings - 07539 377740

Franklyn Nevard - Architect 07515
351894

Fresh Eggs - Roadside stall Fox Farm

Katies Little Beauty Box - 07802
847628



Fair Trade coffee morning

Hello again everyone and a Happy New Year. We haven't had a Fair Trade coffee morning since the beginning of December, which was our "festive" event.

We began our gatherings again on January 25th 2022, but the date didn't coincide for the report being included in this edition of the Quartet, as the deadline for this is 19th of each month. I'm sure we had a good gathering though, and I know our "Frinton friends" were coming with some more of their goodies to go with our wonderful "Fair Trade" coffee.

We plan to be outside again in the warmer weather, it was so successful, and enjoyable to gather with friends in the fresh air. I also know that we will be having another "guest" appearance from Orientie, he was so good and just loved being the star attraction. I'll make sure we know well in advance.

Our next gathering will be on February 22nd 10am-11.30am, when "Love Refills" and the library van will be here as well.

Hope to see you then,
Many thanks

Wendy Mumford 01473 312123

RAYDON PARISH COUNCIL

KEY POINTS FROM MINUTES OF THE
MEETING ON TUESDAY 11 JANUARY
2022

Speed limits

In response to the PC's interest in extending/lowering speed limits in the village, Councillor Hall (SCC) said she would require evidence to support the request. She cautioned that the process was time consuming and would cost between £5-10,000 for the public consultation and design work; if the request was successful, there would be additional costs for signage.

Locality Budgets

Councillors were asked to bring suggestions for projects to the February meeting.

Suffolk CC

It had been proposed that SCC's budget for 2022-23 should rise by 4.5%, to be generated by a 2.99% increase in Council Tax and an increase in grants from Government. The proposals included £1m additional funding for Suffolk Highways over the next four years, and £10m to improve footpath quality and access over the next three years (for areas where there were currently no footpaths). The budget proposals would be presented at a Scrutiny meeting on 11 January, with the final budget discussion at a full Council meeting on 17 February. Councillor Hall confirmed that the chevrons between Raydon and Holton St Mary would be replaced. The Clerk said the broken signpost at Masons Bridge had still not been removed. In response to comments on the Copdock Junction consultation, Councillor Hall said this was a National Highways project and SCC had not been involved or asked to comment.

Vacancies

The Clerk confirmed that no applications had been received for the vacancy advertised via Quartet, the community email and on Facebook. A second vacancy had now arisen, following the resignation of Stephen Coe, and a new recruitment campaign would be launched in the spring; in the meantime residents would be encouraged to apply.

Climate Change

It was agreed to invite Peter Dow, Elmswell Parish Clerk, to be the guest speaker at the Annual Parish Meeting on 12 April. Peter was the main speaker at the Low Energy Showcase held in November.

Charity donations

The Clerk had circulated a list of charities requesting support from the PC; the budget for 2022-23 already included donations to EEAA, St Elizabeth Hospice and CAB. It was agreed to donate £50 to Compassion, a small charity based in Babergh.

Bury to Colchester Pipeline Scheme

It was agreed to invite Bron Curtis, Principal Planning Officer at Babergh & Mid Suffolk, to the February meeting to explain the EIA (Environmental Impact Assessment) scoping process and answer questions. The Clerk would also invite a representative of the Shelley Parish Meeting to attend.

New website

The Clerk invited councillors to have a look at the new website, but stressed that it was still in the development stage and there was more content to be added. She would welcome councillors' initial comments.

Next meeting

7.30pm on Tuesday 8 February 2022, in the KGF Pavilion.

Raydon and District Garden Club

February 2022 is our 42nd year anniversary since we started in 1980.

We as a club have seen many changes to the club with places to hold meetings originally in Shelley Hut, then to the Village Hall (old primary school), and now to the KG5th Pavilion. Field sites with 3 marquees (took 15-20 people) down by Foxes Farm Lower Raydon, in Shelley Priory (Mr Scott), then Raydon KG5th playing field, until 1985 when we transferred indoors to the village hall, which made for a lot less work in both preparation and clearing up afterwards.

As we are now using the pavilion on the playing field it's possible when holding shows we may be able to use part outside for say refreshments which might involve a small tent, between football pitch & pavilion steps but will wait and see in April when we set up first "Spring Show" in pavilion.

January so far has been kind, so on the 17th Jan as I write these notes to meet deadline date we are of course already halfway through January. Have you noticed since December how the nights are starting to pull, already gained at least half hour of extra daylight. It's been nice and mild mostly for winter but as the saying goes "as the days lengthen the cold strengthens" so be prepared to wrap up warm when outside enjoying either your gardens, or perhaps a trip out to enjoy "Winter Gardens" or just the countryside as it shows signs of coming to life once again.

Snowdrops are on the move and starting to flower, soon to be followed by aconite & hellebores, and if you have very early flowering daffodils.

February is the month of **HOPE** and the enthusiasm kicks in as we start to see "Springtime" just around the corner. Ok you say, but it's still cold, and perhaps snow & windy or very wet, but it's only a few weeks away, not months and generally the sun starts to get warmer when it is out.

The rooks start nesting high up in the trees, a good sign of spring and already garden birds starting to pair up for their nesting season from March onwards. By the way the rhubarb will soon be ready for first pickings if you have early varieties.

February is the first month of meetings for the new year and we start on Thursday 24th at 7.30pm in the pavilion. Our guest speaker will be Matthew Long on the subject of "Bulbs Galore for summer colour". Your committee looks forward to meeting all members and non-members on what should be a most interesting evening and followed by refreshments and a raffle as usual. Raffle prizes for all meetings and show days always gratefully received thank you.



Have you renewed your membership for 2022 yet ?? If not our treasurer Ann will be at the meeting to accept your payment, and will also hand out paid up membership cards to all. This will have the dates and speakers/subject etc plus show dates and full list of your committee members with phone number contacts if needed.

At this point in time, we're unable to confirm the coach outing in June, but it is hoped to be announced at the February meeting night as to where, date and cost involved.

At last things seem to be moving forwards and hopefully we can all enjoy 2022 so much more than we did in 2020 & 2021.

Your committee looks forward to your continued support at all meetings, outside garden visits, coach outing, Spring & Summer shows. And may the weather be kind on all the outside events.

Geoff Horrex, 310422 or 07810086143



Ideal for your special event

The Raydon Pavillion is for hire

Fully carpeted room for up to 80 people
Kitchen and preparation room
Easy parking

Available morning, afternoon, and evening.

For Details Contact Mark Smout
Tel 07748 842750 or email
marksmout@gmail.com

Raydon Club

The Raydon Club opens every Wednesday evening at the Pavilion.

By popular request, from the start of 2022, the bar will open earlier, at 7:30pm, and will close at 10:30pm.

A good selection of beers, ciders, wines and spirits are available at considerably less than pub prices.

Membership of the Club is open to all residents of the village (over 18s only) and anyone wishing to join is welcome to come along on a Wednesday and enjoy a drink and a chat."

It's Tea Time!

RAYDON PAVILION
King George's Playing Field

SATURDAY 26 MARCH
CREAM TEA AT 3PM

followed by

MARK MITCHELS' talk on

CARDINAL WOLSEY

ENTRANCE STRICTLY BY TICKET ONLY

Available in advance for £10 each from
07703 498508



Holton St Mary

SHOP
LOCAL

In Holton

Love Refills mobile shop -
www.loverefills.co.uk

Ann Mason Care - 01206
233372

Holton St Mary Village Hall

The Hall is back in use and taking
bookings again. Please contact Tanya
Kunz on 01473 311570

Slow Stitch

The Slow Stitch group is meeting again on
the third Thursday of the month at 2 - 4pm
in the Village hall, Holton St Mary. Whether
you sew, knit, crochet, embroider, or enjoy
tapestry, you are all welcome to join our
drop-in group. We are not providing
refreshments at the moment but you are
welcome to bring along a cup of tea.

The aim of the group is to take our time as
we enjoy stitching and we are happy to
help beginners. Thank you for all the
donations of wool that the group have
received this summer. This is much
appreciated as we complete a number of
community projects to support the Marie
Curie charity and Women's refuge in
Ipswich.

For more information contact Jeanette
Appleton 07768418942

First Friday of the Month Lunch Club



On the first Friday of every month (except
August) there is a Lunch Club in the
Village Hall for past and present
residents of the
village of Holton St Mary.
All ages welcome!

A Light Lunch will be served between
12.30 - 2.00 pm
at a cost of £3.50 per head.

If you would like to join us for lunch please
contact

Frances Torrington: 312046/
familytorrington@btinternet.com
or
Sally Thurlow: 312080/
salthurlo@gmail.com

We are also looking for volunteers to help
run the lunches and help on the day.

HSM Social Club

Every Friday in the Village Hall 17:30 to
22:00. New members always welcome
If you want any further information contact
Bob Holmes
Email bobholmes55@icloud.com
Tel No 07966 266293



Green Gym

The next exciting and rewarding session of the Green Gym will be on Saturday, 5 February. We meet in Church Square at 10.30a.m. The Group will work to ensure the footways are clear and tidy up some of the verges in anticipation of a glory of colour in the following weeks. All are welcome to join us.

Please do let Richard Appleton (07976 010754) know if you have any specific suggestions for particular tasks that you think the Green Gym could undertake.

Thank you.

Holton St Mary Millennium Green Trust

Just a reminder that subscriptions of £12 for the Century Club draw are now due, if you have not yet paid please do so now so that I can finalise the numbers for the year.

Marjorie Haste 01473 311615

Village Recorder

Please note that I have handed over the voluntary post of Village Recorder for Holton St Mary to Sally Thurlow.

Marjorie Haste

SESAW NEWS

It's time for a cat's eye view of SESA with a story just as good as Ken's dog-tale last month.

We recently had the delightful experience of reuniting with his owner, a cat that was missing for about eighteen months. Kind people fed him until new neighbours realised he belonged to no one nearby. They asked Mother to check him for a microchip – and he was reunited with one happy owner who had given up hope of seeing their beloved pet again.

If you befriend a stray please ask a vet or rescue centre to scan for a chip and have your own cats microchipped, we are just as important to our humans as dogs are to their owners. Speaking of canines, we have a friendly pair of seven year old dogs looking for a home where they can be absolutely spoilt.

Dougie and Hazel love their cuddles but tend to tell other dogs off so would be better as the only pets. Hazel is rather bossy and Dougie's sight is poor but that does not stop him, although sometimes he returns from walks in someone's arms! If you can offer this delightful twosome a loving home with a very secure garden, please phone for an appointment to meet them.

That's enough from me, rest assured the chatty Chihuahua will be back next time, hopefully having learned that people sometimes need to read the feline point of view and a prime example of the superior species is me, Ollie (the Black) Cat.

**Suffolk & Essex
Small Animal
Welfare,**
Registered
Charity
No.1124029,
Stoke Road,
Leavenheath,
CO6 4PP. Tel:
01787 210888

www.sesaw.co.uk



Holy Family Roman Catholic Church

Ipswich Road, Brantham CO11 1TB
Parish Priest: Fr. Paul Vincent OCD
Assistant Priest: Fr Bineesh Elenjikkal
OCD 180 Hawthorn Drive
Ipswich IP2 0QQ Tel: 01473 684963.
www.stmarksparish.org.uk

The weekly Newsletter, with Mass times, is always displayed in the cabinet alongside the Church's front door and may also be read on the regularly updated website www.stmarksparish.org.uk together with other Parish news. Fr Bineesh Elenjikkal is the Ipswich Hospital Catholic Chaplain assisted by Deacon Rev Clive Brooks (01026 396319)

All are very welcome to attend Holy Family services; it is not necessary to be a Catholic and enquiries about the Catholic Faith are always welcome. Please contact The Priory, as above, or a local person whom you know is a Catholic.

Services planned for February:

Tuesday 1
9.20am Eucharistic Adoration
10am Mass

**Sunday 6 5th SUNDAY IN
ORDINARY TIME**
9am Mass

Tuesday 8
9.20am Eucharistic Adoration
10am Mass

**Sunday 13 6th SUNDAY IN
ORDINARY TIME**
9am Mass

Tuesday 15
9.20am Eucharistic Adoration
10am Mass

**Sunday 20 7th SUNDAY IN
ORDINARY TIME**
9am Mass

**Tuesday 22 THE CHAIR OF ST
PETER**
9.20am Eucharistic Adoration
10am Mass

**Sunday 27 8th SUNDAY IN
ORDINARY TIME**
9am Mass

Please refer to the weekly Newsletter, with Mass times, that is always displayed in the cabinet alongside the Church's front door and may also be read on the regularly updated website www.stmarksparish.org.uk together with other Parish news.

stour valley

U3A

learn, laugh, live

Make the most of life once you're no longer in full time work and explore new ideas, skills and interests. Across the UK, u3a members are learning, staying active and having fun in later life. It's local, social, friendly, low-cost and open to all.

Most of our group activities are continuing as usual. Our next monthly meeting/lecture, on 9th February, will take place using Zoom, unless there is any relaxation in the Government's guidelines, and David Williams gives a lecture on how London designed and built the world's first underground railway – "Mind the Gap".

On the first Friday of each month, coffee mornings for new and current members, are held at the Lambe School East Bergholt from 10am until 12 noon.

You can find more information and contact details on our website u3asites.org.uk/stourvalley

DEDHAM PLAYERS FOR DEDHAM

The Dedham Players have not staged any productions at The Assembly Rooms since October 2019. The pandemic prevented any attempt at staging a show during 2020 and 2021. Following the shutdown of last year it has become apparent to the members of the Dedham Players committee that there is a need to reflect on the future of the group. We feel we are at something of a crossroads in considering the way forward and in our ability to stage further productions at Dedham.

When the Dedham Players was formed (more than 50 years ago in its present format) there was a wide pool of talent residing in and around Dedham enthusiastic to join in activities both on the stage and behind the scenes.

In the past we have been able to recruit Dedham residents to help out in meaningful ways, not just on the production being staged, but also the running of the group. However, as the years have gone by there has remained only a small core group of people to keep the Dedham Players going.

The Dedham Players committee is continuing to meet and reflect on whether we can successfully mount a production in the future. We now have to admit that unless there is meaningful involvement from persons willing to join and help to shape the future of this once vibrant group then the task will become increasingly more difficult and ultimately unworkable.

The Dedham Players is at risk of disappearing if we are unable to recruit new members to help us run our club.

The current committee believes the community wants to continue to have a drama group in the village, but we do not know if this is the case. The question has to be asked – should the Dedham Players continue?

If the answer is 'yes' then we need willing new participants to step forward. Could you be one of those?

If it is 'no', then we will ultimately have no choice but to roll up our stage curtain and close.

We would like to hear your views.

Please contact either by email or phone:

David Thompson (Chairman) at DavidBThompson58@gmail.com 01206 393711 or Rachel Culley (Secretary) at rachel.culley@btinternet.com 07850 942647



Anyone for tennis? Join us at Dedham Lawn Tennis Club!

Whether you've never held a racquet or are a budding Cameron Norrie or Emma Raducanu, we'd love to welcome you to our friendly village tennis club on the playing fields in Dedham.

With club sessions, teams in local leagues, coaching for adults and juniors and a wide range of membership options available, we're always on the lookout for new members. Play continues throughout the winter & subs have just been reduced.

Search online for Dedham LTC to find out more and see how you can get involved.

Bin collections

Week Commencing			
	31 st January	Refuse Week	
	7 th February	Recycling Week	
	14 th February	Refuse Week	
	21 st February	Recycling Week	
	28 th February	Refuse Week	
Waste Services 0300 1234 000 (option 4) Email: recycling@baberghmidsuffolk.gov.uk Visit www.recyclenow.com to find your nearest recycling banks			



Do you want a
recommendation?

Tell us your favourite local service - could be a pub or restaurant or takeaway, or other service you think would benefit getting a recommendation...If we agree, we'll print it here

The Layham Queen take out service on Fridays & Sunday Roasts - Steve and Tannith are very community minded and give a very good service

Simply Thai Manningtree - It was simply delicious! Freshly cooked, and arrived within the quoted time frame. 01206 396060. Delivers to Holton St Mary

Zaynab and Mother Indian at Capel. Really good and highly recommend. They don't deliver, but it's made quickly for pick-up.

Brantham Bull 01473 328248

Lucca Enoteca Manningtree 01206 390044

Oranges & Lemons East Bergholt 01206 299000

the florist in East Bergholt does lovely flowers:- www.gayedrummond.com

Sam Pritchard sam@samselectrics.co.uk 07940031776 - Sam can certify safety for insurance and landlord work too. Anyway, he's great.

There's room for more...let us know...!

Local Services

The Constable Country Medical Practice

The Medical Centre,
Heath Road, East Bergholt, Colchester
CO7 6RT

Surgery opening hours

8.00am – 6.30pm Monday to Friday
Telephone 01206 298272
Fax 01206 299010

36 The Street, Capel St Mary, Ipswich
IP9 2EE

Surgery opening hours

8.00am – 6.30pm Monday to Friday

Dispensary 8.30am – 6.15pm
(closed between 1-2pm)
Telephone 01473 310203
Fax 01473 311722

Crime prevention

[http://www.suffolk.police.uk/safetyadvice/
reportacrime/tellthepolice.aspx](http://www.suffolk.police.uk/safetyadvice/reportacrime/tellthepolice.aspx)

PC 1347 Gilkes Pcco 3041 Cooper
babergheast@suffolk.pnn.police.uk
Telephone...101



MOBILE LIBRARY

Stratford St Mary - Route 11

The bus stops every 4 weeks on
Wednesdays, subject to current restrictions

16 February, 16 March, 13 April

Black Horse - 11.05am - 11.20am
Tally Ho! Corner - 11.25am - 11.45am
Strickmere (School Lane end) - 11.50am -
12.10pm

Route 14

The bus stops every 4 weeks on
Tuesdays

25 January, 22 February, 22 March, 19
April

Holton St Mary

Church Square - 9.30-9.45am

Raydon

St Mary's Raydon - 9.50-10.30am

Lower Raydon

Sulleys Hill - 11.30 - 11.45am

Higham

The Green - 11.55am to 12.10pm

The **customer service line 01473 283838**
is staffed 9am to 5pm from Monday to
Friday and can handle any library
customer queries renewals and
reservations to any general library queries.
An answer phone is available outside of
operating hours and people can also email
help@suffolklibraries.co.uk

Local Directory

THE GATTINETTS

OFFICE and WORKSHOP

PREMISES TO RENT

- ☐ Central East Bergholt with excellent road and rail links
- ☐ Various sizes with tailored leasing arrangements
- ☐ Carpeted offices with own toilets and kitchenette
- ☐ Quiet rural location with plenty of parking



www.gattinets.co.uk

Or ring 01206 393089 / 07941 781489 to check availability

ARTSCENE

Local Mobile Picture Framing Service
30+ years experience

Oil paintings, Photos, Prints, Medals, 3D Bar frames,
X-Scratch, Tapestry, Mount Cutting, Stretching Also
Frames cut to size for the DIY enthusiast

FOR MORE DETAILS TELEPHONE
LESLEY ON 01473 310630 (Bentley)
MOBILE 07500 488667
Email: lesley.artscene@gmail.com

Fix-A-Lock

Locksmith - available 24/7

- 24 HOUR LOCKSMITH -
Wooden and UPVC doors

Ted Blanchette
07836 551032

R.m.k.chisnall

YOUR LOCAL MACHINE SERVICE

For mower repairs, compact tractors
and small machinery

Mobile: 07557 771721
Email: r.m.k.chisnall@gmail.com

John Deere trained
Address Winaire, Radleigh Road Higham, Colchester CO76LF

Bespoke, handmade soft furnishings
& upholstery



Contact Annabel

07539 722496  [sewnimble](https://www.instagram.com/sewnimble)

KATE O'CONNOR - BHSAI

Horse riding free lance instructor.
DBS checked up to date, Child safeguarding up
to date, 20 years teaching experience
Showjumping/ x country/ dressage
Confidence building /natural horsemanship.
Behavioural problems / loading etc .
Can come to you or meet at a hired venue.
Ip7 and Co7 area.

Mob . 07891135561

Email katevandervord@live.co.uk



Dave's Private Hire

Professional and friendly service

Based in Dedham

For all your travel needs:

- Visits to local shops
- Days out
- Airports
- Cruise terminals

Licensed to carry up to 4 passengers

To make a booking please call

07834 570479

davesprivatehire44@gmail.com

Plethora
of Words.

Professional,
expert copy and
content writing

Website Content
Blogs
Social Media Content
Articles
Press Releases
CV & Job Spec Writing
Excel SpreadSheet
Assistance
...and more

01255 214612 | 07521 735940

info@plethoraofwords.co.uk

www.plethoraofwords.co.uk



VILLAGE LOCATION WITH A WONDERFUL
GARDEN AND OUTSIDE CLASSROOM.



01206 322466

admin@abcpreschoolstratford.co.uk

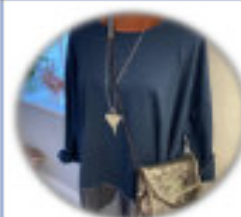
www.abcpreschoolstratford.co.uk

CHARITY NO. 111402

30 funded hours for 3 & 4 year olds
15 funded hours for eligible 2 year olds
8.45am to 3.00pm (term time only)

JOIN US FROM 2 YEARS OLD

**OFSTED
OUTSTANDING**



Ladies Boutique in East Bergholt

Selling clothes, scarves, bags, jewellery and purses

Wed, Thurs and Fri – 10am - 3pm

Sat – 10am - 1pm

Contact Sarah McGrath

The Street, East Bergholt CO7 6TF

 info@sarahjane-colchester.co.uk

 Tel 01206 299160

 Sarah Jane's Boutique

 www.sarahjane-colchester.co.uk



Hall Farm

Shop & Cafe Restaurant

HALL FARM
SHOP | DELICATESSEN | CAFE

Located on the outskirts of Stratford St Mary within the beautiful Dedham Vale, Hall Farm Shop & Cafe Restaurant offers stunning views, wonderful food and great shopping.

The Cafe Restaurant serves the most amazing food, from fabulous breakfasts and delicious lunches to exquisite cheese scones and mouth-watering cakes. Booking is advised.

Our Farm Shop, Butchery and Deli stock a wide selection of local and regional quality produce, as well as offering a tempting array of homeware, gifts and plants.

Restaurant Open: Mon to Fri 9am to 5pm / Sat and Sun 10am to 4pm
Farm Shop Open: Mon to Sat 9am to 5pm / Sun 10am till 4pm





Shop: 01206 322572, shop@hallfarmshop.co.uk | Restaurant: 01206 323600, cafe@hallfarmshop.co.uk
Hall Farm, Stratford St Mary, Colchester, Essex CO7 6LS | www.hallfarmshop.com



Rheel Coating Co

We are now pleased to offer our tyre fitting service.

- New tyres
- Wheel balancing
- Puncture repair
- Valve replacement
- Silver and black wheel weights
- Tyre disposal

Services we offer:

- Powder coating
- Brake caliper refurbishment specialists
- Sand blasting
- Chemical stripping
- Braking system/pipes replacements

There's painting it, and there's giving it a Rheel coat

FOR MORE INFORMATION & PRICES PLEASE SEND US A MESSAGE

" We are situated in Raydon on the B1070 "

Contact info:
07539377740 – info@rheelcoating.co.uk



Leisure Hire

Marquee and Equipment Hire

- Marquees erected on most surfaces
- Awnings • Walkways
- Extensions to Buildings • Linings
- Lighting • Furniture
- Flooring & Staging
- Heating

Summer or Winter Weddings
Anniversaries Corporate

Brochure upon request
www.leisurehiremarquees.co.uk

(01206) 242196

Holiday Let in Cromer Coach House Studio - Sleeps 2

- Spacious two-level studio
- Double bed. Ensuite shower
- Large sitting room with wood burner
- Fully fitted kitchen with dining area
 - Pretty courtyard garden
- 5 minute walk from the beach
- Dogs allowed (maximum of 2)

Please visit our website: www.coachhouse.studio

Blackwell Barn Holiday Let The Street Raydon IP7 5LW

- Large double/twin bedroom
- Ensuite shower
- Fully fitted kitchen
- Countryside setting
- Cozy, modern and Covid cleaned

All enquiries via www.cottages.com



**PLANT CENTRE
GARDEN & CAFE**
For Specialist and Popular Plants

Renowned plant nursery right on your door step, established by Rupert and Sara in the walled garden at East Bergholt Place.

Garden & Arboretum open Mar -Sept
Café and gift Shop **OPEN DAILY**
10am-5pm
East Bergholt Place, CO7 6UP
Tel: (01206) 299 224



Design, Implementation and maintenance of
Garden Landscapes
Improve your garden this year!
Wendy Norman 07756 364560
Email wendy@finestgardens.co.uk
RHS qualified
Member of The Gardeners Guild



GETTING YOUR GARDEN READY FOR SUNSHINE?

Visit our yards in IPSWICH and COLCHESTER for a wide range of fencing, trellis, decking, paving, artificial grass, sleepers, decorative aggregates and much, much more.

With service you can expect from an independent builders' merchant which has been around for almost 200 years.

COLCHESTER 01206 715500 | **IPSWICH** 01473 689605

**Collier &
Catchpole**
COLLIERCATCHPOLE.CO.UK

Looking for aggregates,
paving, walling and edging?

Go to our website and
click on our online shop.
WE DELIVER!



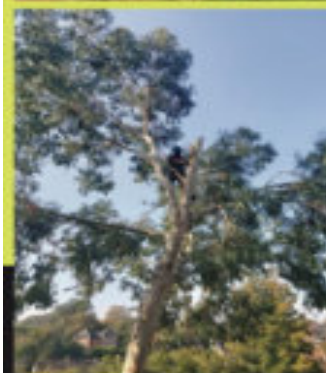
Bland Landscapes Ltd

Our services include:

01206 230882
www.blandlandscapes.co.uk

Ivydene, Frating Road
Colchester, Essex, CO7 7SY

Treework Specialists	All types Fencing inc
Felling	Equestrian Fencing
Pruning	Driveways
Reducing	Patios
Reshaping	Turfing
Stump Grinding	Planting
Seasoned Logs	Grass Cutting



AB Trees

- Tree reduction
- Tree felling
- Tree pruning
- Hedge trimming
- Vegetation clearing
- Lawn Cutting
- Log splitting
- Firewood
- Can cover all aspects of arboricultural tree work

07808 808147
antonbray1990@gmail.com
Ipswich



DEDHAM VALE TREE SURGERY

NPTC qualified, fully insured
24 hr emergency tree work
Hedge maintenance and reduction
Logs kindling and wood chip supplied
Stump grinding



All tree work undertaken
Crown reduction and shaping
Crown lifting and thinning
Pruning and pollarding
Felling, sectional dismantling

Specialising in big trees in delicate situations


Info@dedhamvaltetreesurgery.co.uk mobile 07756 811098
www.dedhamvaltetreesurgery.co.uk

ESSEX & SUFFOLK

Garden Machinery

Servicing and repairs to lawn mowers and all types of garden machinery.

Annual servicing, breakdown repairs and blade sharpening.



Work undertaken to petrol and electric machinery & manual tools sharpened. Free collection and return in the Tendring and Babergh areas.

Local, family run business.
All enquiries please call 07857493364
Or Email, essexsuffolkmachinery@outlook.com




EARTH & TURF

Garden services.
Competitive rates

Call Bryan
07822 078243

Swift Garden Services S G S

DESIGN
PLANTING
CLEARANCE
MAINTENANCE

HEDGE CUTTING AND LAWN MOWING
ALL YOUR GARDEN REQUIREMENTS CATERED FOR
For more information please contact:
R SWIFT (HND Commercial Horticulture)
Telephone 07947 322429



Mending your home

ACER TREE SPECIALISTS LTD

All staff NPTC qualified and fully insured. 10 million public liability

- 24 hours emergency tree work
- All aspects of tree work under taken .
- Hedge maintenance and reductions.
- Stump grinding
- Tree removal
- Pruning
- Pollarding



25 years experience. For a free no obligation estimate

Call 07786836928 or 07891135561
Or Email Acertreespecialists@hotmail.co.uk

BAILAND

CONSTRUCTION LTD

EXQUISITE ATTENTION TO DETAIL

TOAD HALL
THE HEATH
DEDHAM
ESSEX
CO7 6BT
01206 323230

WWW.BAILANDCONSTRUCTIONLIMITED.CO.UK
ENQUIRES@BAILANDLTD.CO.UK



Philip Avery

Domestic Electrician

Local, reliable, competitively priced

Registered Part P electrician
Plumbing
Carpentry / joinery
Home improvements/maintenance

2 The Gardens,
Raydon
Tel: 01473 311261
Mob: 07923 434689
avery218@btinternet.com



**Andy Slocombe brickwork
serving the Dedham vale**

for all your building requirements
property maintenance, roofing, block paving, landscape,
repairs & restoration

tel 01206 322884 / 07786 871364
3 Constable Row Manningtree Road
Dedham or Colchester Essex CO7 6DW

S.W. STIFF

Carpentry & Building Maintenance

For all your carpentry & building
maintenance, call for a no obligation free
quote. No job too small.

CONTACT : Steven
on 07811 005241

Michael J Byles

Plumbing & Heating

Specialist in Oil Boiler installations,
Maintenance & Servicing
- Oftec registered.

General Plumbing & Heating
work also undertaken.

Tel: 01206 822225
Mobile: 07717 012433
Email: Michaeljbyles@aol.com



*Call us for a free
quotation*

95 School Lane, Stratford St. Mary,
Suffolk, CO7 6LZ
Tel: 01206 322969
Mob: 07534424493
E-Mail: info@orwellelectrical.co.uk
www.orwellelectrical.co.uk

- Electrical Installations
- Electrical Testing
- Lighting Design
- Fire Detection Services
- 24-Hour Call out
- Response Maintenance



Andy Smith Roofing

TILING
SLATING
FASCIAS AND GUTTERING
LEADWORK
POINTING
GENERAL PROPERTY MAINTENANCE
30 YEARS EXPERIENCE



For more information contact
Harvest Cottage, Upper Street
Stratford St Mary CO7 6JW
01206 322882
07754368693



tenon decorating

"We are Specialists in
Grade II Listed Buildings"

For all your internal and external painting and decorating work:

- Doors, Windows, Skirting and Fascias
- Artexing and Coving
- General Repair and Maintenance
- Floor and Wall Tiling
- Wallpapering
- NVQ2 Qualified

A PROFESSIONAL PAINTING & DECORATING SERVICE
FROM PEOPLE YOU CAN TRUST

For a FREE Estimate Contact Steve Ferguson on 07719 357322 or 01206 393351
www.tenondecoratingtd.co.uk - tenondecorating@btconnect.com
Sbras, East End, East Bergholt, Colchester, Essex CO7 6XQ



Ashley Short

Carpentry, Joinery, Property Maintenance
& General Handyman



Kitchen fitting -
Bespoke units made
Decorating,
Renovations
No Job too small
Local and Reliable

01473 311226 07904 875556

Jackson

Plumbing and Heating East Anglia Ltd

- ❑ **Installation** - We install all makes and models of boilers, Combi and condensing specialists
- ❑ **Servicing** - All models serviced from £50.00
- ❑ **Repair and Maintenance** - All work Guaranteed, highly skilled engineers
- ❑ **Plumbing** - Bathrooms, cylinders, leaks etc
- ❑ **OAP 15% Discount**

Special discounts for residents of Higham, Holton St Mary, Raydon and Stratford St Mary

£10.00 discount - Servicing boilers and minor repairs
£30.00 discount - larger repairs
£150 discount - boiler changes
£250 discount - full installation

07834 612009
01206 322063
01473 214215

(estimates given before work undertaken)

Brett Valley Installations

Oil boiler Service Engineer.

Very experienced in fault diagnosis and repair, servicing and installation of oil fired boilers and heating systems.

Local, Reliable, Competent.

Nick Marno Tel. 01206 337316 or 07896 054439



ROSEA

PLASTERING SERVICES

07989 659967

roseaplastering@gmail.com

roseaplastering



David Friend Oil Heating Services
 Oil Fired Boiler Service, Repair and Installation Specialist



- **Servicing and commissioning of oil fired boilers.**
- **Boiler and system breakdowns.**
- **AGA's, Rayburns and Stanleys.**
- **Oil tank replacement and installation.**
- **Oil boiler replacement.**
- **All central heating system components catered for.**

No call out charge. Free quotes.

Tel 01394 411839 Mobile 07786 971425



**H.C. SMITH
BUILDERS**

SKILLED WORKERS

ESSEX SUFFOLK

BRICKWORK EXTENSIONS REPAIRS
 LANDSCAPING PATIOS REPOINTING

RELIABLE. FRIENDLY. METICULOUS.

✉ ENQUIRIES@HCSMITHBUILDERS.CO.UK

☎ 07468 456772

WWW.HCSMITHBUILDERS.CO.UK

GRANSON
 Plumbing & Heating Services

Gas Safe Registered Engineers
 Local, Friendly & Reliable Service

- **Boiler & Central Heating Installations, Servicing & Repairs**
- **Power Flushing**
- **Under Floor Heating**
- **Bathrooms, Wet Rooms Taps & Showers**
- **Gutters, Downpipes & Drain Rodding**

**TELEPHONE:
07912 161 646**

EMAIL:
gransonplumbingandheating@hotmail.com



**ARDLEIGH
CHIMNEY SWEEP SERVICES**

- Traditional and Power Sweeping
- CCTV Inspections
- Safety Certificate Issued
- Fully Insured

ANDREW SMITH

01206 231718 • 07845 249820

31 HARWICH ROAD, LAWFORD, MANNINGTREE, ESSEX CO11 2LS

**Essex & suffolk
PEST SOLUTIONS**

Your local pest control experts
for home & business

- Free advice, fast response
- Highly accredited, fully qualified & insured
- Discreet - unmarked vehicles

Info@eandspestsolutions.co.uk
Tel: 01473 328092 (Holbrook)

Nigel Bruce

Industrial & Domestic
ELECTRICIAN

'The Swift', Upper Street, Stratford St. Mary,
Colchester CO7 6JW
Telephone: 01206 322751

GORDON SHORT

PAINTER / INTERIOR & EXTERIOR,
PROPERTY MAINTENANCE
& GENERAL HANDYMAN

- Trustworthy and efficient
- Property Maintenance & General Handyman
- No job too small or too big
- Local and reliable

GIVE ME A CALL:
01473 313053 / 07773 236642
gordonshort1959@icloud.com

**Richardson
.....&.....
Rothwell**

Plumbing & Heating Ltd

FRIENDLY, LOCAL PLUMBING AND HEATING ENGINEERS

SPECIALISING IN OIL AND GAS BOILER INSTALLATION,
REPAIRS AND SERVICING

COMPETITIVE PRICES

ALL PLUMBING WORK UNDERTAKEN. NO JOB TOO
SMALL

Unit 1
Dedham Vale Business Centre
Manningtree Road
Dedham
Colchester
Essex CO7 6BL

Tel: 01206 323732 Fax: 01206 323735
E-mail: enquiries@richardsonandrothwell.co.uk

Gas Safe registration number: 184271

In the House

Hicks TV & Audio Solutions
(Formerly BV Hicks Ltd)

Are you having trouble setting up or operating your TV / Audio or DVD?
Has your equipment stopped working?
Does your TV need a re-tune?

Help is at hand - Call Toby Hicks
01449 771991 / 07968 686035

AERIAL & SATELLITE SPECIALISTS

- DIGITAL TV AERIALS
- SKY & FREESAT
- ADDITIONAL TV POINTS
- TV WALL MOUNTING
- WIFI EXTENDERS
- AUDIO SYSTEMS INCLUDING SONOS
- BUGULAR ALARMS
- CCTV SYSTEMS
- REPAIRS & MAINTENANCE

MJS SYSTEMS
For A Free Quote and Advice Call

CAI - RDI & TRUSTMARK APPROVED

digital TV Approved Member cai plus TRUST MARK
www.mjsystems.co.uk
Buckingham, Bedfordshire MK18 2JY

EDg
edwards design group

Over 25 years of professional making & fitting of curtains and blinds using the very best available products.

Fabrics, wallpaper, paints, floor coverings, cabinet furniture, lighting & upholstery.

Visit our showroom in East Bergholt or our website: www.edwardsdesigngroup.co.uk
Email: info@edwardsdesigngroup.co.uk

The Gattinotts, Unit 2a, Hedleigh Road
East Bergholt, Colchester CO7 6QT
01206 299780



SCHOFIELD REMOVALS Est. 1919

Removals and Storage

- We cover local, national and international moves.
- We've been moving people from Suffolk and Essex for nearly 100 years.
- Find out about our specialist moving services; from pianos and paintings, to full packing services. We're always happy to help!
- We have over 100 clean and safe self-store units.
- Our staff are long serving and fully trained to BAR standards.

— Your move, safe in our hands —
01206 233376 | www.schofieldremovals.co.uk | info@schofieldremovals.co.uk



ARRDEN VALE

kitchens

100% EXCLUSIVE, BESPOKE, HANDMADE TIMBER

Established in 1997, Arrden Vale Kitchens is a family business dedicated to producing bespoke handmade kitchen, bedroom and office furniture.

We specialise in the design, creation and installation of exclusive handmade kitchens throughout East Anglia.

T: 01449 782062
E: info@arrdenvalekitchens.co.uk
www.arrdenvalekitchens.co.uk



AGA • BETHAZONE • FRANK & PERRY • Fisher & Paykel • SIEMENS • Quooker • Miele • Lindor



Ann Mason CARE

Full and part-time care workers required
 to provide care visits to people in their own home

- Flexible Hours
- Pay to match qualifications and experience
- Training provided if required

For further information call: 01206 233372
 Or visit: www.annmasoncare.co.uk



DianaM Cleaning

- Home weekly cleaning
- Home deep cleaning
- Office cleaning

Contact information: Diana Marinova

Mobile number:
07925 624123

Email address:
dianamarinova61@yahoo.co.uk



Right at Home

Quality Care in Your Home



WE'RE HIRING

Would you like a Care Service that offers you:

- A Discreet Service
- Consistent CareGivers
- Set Visit Times
- A Person Centred Approach

We can provide:

- Personal Care Visits
- 24hr Live-In Care
- Companionship
- Sleeping/Waking Nights
- Light Housekeeping



Contact us today at

☎ 01206 932792
 ✉ colchester@rightathomeuk.com
 🌐 www.rightathomeuk.co.uk/colchester
 ⓘ www.facebook.com/rightathomecolchesteranddistrict/

 Care Quality Commission
 Good

 TOP 20 AWARD 2019
 homecare.co.uk



9.6

Our average care home review score*
carehome.co.uk

Rated Jan 2020
Good
Care Quality Commission

*carehome.co.uk scores are based on independent reviews with a maximum score of 10. Rating correct as at 09/12/2021.

Who cares if Elsie loves to Foxtrot? We do.



BlackbrookHouse care home, Gun Hill, Dedham, Colchester CO7 6HP
Call 01206 805839 Visit anchor.org.uk/BlackbrookHouse

**If your picture needs framing:
We can do it!**

ALB-Framing

07769 858076

**Whilst following Covid guidelines
home and office visits are available**

- Bespoke framing
- Gallery wrap
- Float mount
- Block mount
- Sport shirt framing
- Medal framing
- Antique framing
- Gift vouchers

As members of Fine Art Trade Guild, who wrote the international standards for picture framing, we work to these requirements.

www.alb-framing.com
info.albframing@gmail.com




**CRAFTED BY
20 GREENWOOD 20**

**HANDMADE
UPCYCLED
ITEMS FOR
THE HOME
AND GARDEN**

We take things that would otherwise end up being thrown away and craft them into unique and beautiful items.

- Flower Vases
- Furniture
- Portable Bars
- Rustic Tea Trays
- Wall Art

Want something bespoke?
Commissions welcomed.

Tel: 07947 211 802
craftedbygreenwood@gmail.com

[f](https://www.facebook.com/craftedbygreenwood) [i](https://www.instagram.com/craftedbygreenwood)
@CraftedByGreenwood

Professional Services



ABILITY
physiotherapy

**Musculoskeletal
& Sports injury
clinic**

- Back Pain
- Neck Pain/Whiplash/Headaches
- Tennis and Golfer's elbow
- Achilles and Patella tendinitis
- Rotator cuff injury
- Orthopaedic rehabilitation following surgery

www.abilityphysiotherapytd.co.uk
30 Harwich Road, Loxford, CO1 2LJ
sara@abilityphysiotherapytd.co.uk 07900 908 607



Susan Morrison
Registered Osteopath

TEL: 01206 299027
MOB: 07919 101099
email:
susie.kramers@gmail.com

Abbey View, Rectory Hill
East Bergholt, Suffolk,
CO7 6TG

Nayland Chiropractic

Supporting Your Wellness

Inga Hurren Registered Chiropractor

4 Church Mews, High Street, Nayland CO6 4JF
t: 01206 264139
e: enquiries@naylandchiropractic.co.uk
w: www.naylandchiropractic.co.uk



Body Mind as One

Movement & Mindfulness for Adults

*Classes are held in a private studio in Chattisham, IP8 3QG
maximum of 5 clients per class*

Weekly Classes on
Mornings: Mon, Tue, Thu & Fri
Evenings: Mon & Tue

Styles taught
Yogalates™
Somatic Exercise
Yin Yoga
Restorative Yoga
Yoga Nidra Meditation
Guided Relaxation
Mindfulness

For full details, please visit

www.bodymindasone.com



London House, High Street,
Dedham CO7 6HA
Tel: 01206 322674

Web: www.pedicarefootclinic.co.uk
Email: nicola.pedicare@gmail.com
Mob: 07732 039726
Nicola Rampton Dip.FH MAFHP

Foot health
check and
treatments for a
range of foot
problems and
conditions



Osteopathy and Sports
Therapy/Massage Clinic
in the heart of Dedham
providing treatment for:

- Back pain & sciatica
- Arthritis pain & stiffness
- Neck & shoulder pain
- Trapped nerves
- Tennis/Golfer's elbow
- Tendinopathy
- All joint strains
- Muscle/ligament strains

Dedicated to getting you better.



**DEDHAM
OSTEOPATHY**

Luke Jackman Bsc Hons Ost
Registered Osteopath

Tel: 01206 323 239 / 07974 144593
www.dedhamosteopathy.co.uk

One hour initial appointment • Free on-site parking • Open weekdays, evening & weekends

Chiropody/Podiatry service
Direct to your home

Covering Stratford, Higham, Holton,
Raydon & all local areas.

For enquiries please contact

Mr C Dunn,
BSc Hon's Podiatry.
MChS, HPCP
Registered
Chiropodist/Podiatrist.

01473 211217
07803601085

**Franklyn
Nevard
Associates**

Architecture and Interior Design

Thurland, Salfrey Hill, Lesser Raydon, Ipswich, Suffolk IP7 5QJ



**New Build / Extensions and Alterations / Feasibility Studies / Planning
Building Regulations and Tender Specifications**

Contact Franklyn

tel: 01473 372 382 Mobile: 07503 311 854
email: franklyn@franklynnevard.co.uk
Web: www.franklynnevard.co.uk

ESTABLISHED IN 1980



**"I'll sort
it out
tomorrow"**

**We can make it easy to prepare
an LPA today!**


When they are needed, the absence of Lasting Powers of Attorney results in additional time, stress and cost for those trying to help look after your affairs. Putting LPAs in place before they are necessary provides you with protection in regard to your financial affairs and welfare choices, which many people wrongly believe their loved ones can deal with for them if they ever become unable.

**Contact us today to protect
yourself and your loved ones.
Legal advice with a conscience.**

FJG FISHER
JONES
GREENWOOD
SOLICITORS

Fisher Jones Greenwood LLP, Charter Court,
Newcomen Way, Colchester Business Park,
Colchester, Essex, CO4 9YA
Offices across Essex and London

01206 700585
www.fjg.co.uk
enquiry@fjg.co.uk





**THE
DEDHAM VALE
DELI**

WWW.DEDHAMVALEDELI.CO.UK

Your local online deli service bringing curated
artisanal products direct to your door.

- Hand Crafted Cheese
- Olives & Antipasti
- Oils & Vinegars
- Meze & Tapas
- Nibbles with Drinks
- Charcuterie & Fish
- Bakery, Crackers & Accompaniments
- Healthy Snacks
- Ethically sourced Teas & Coffees
- Preserves, Jams & Honey
- Gift Hampers & Holiday Cottage
Welcome Boxes



Order Your Deli Delights, Delivered To Your Door:
WWW.DEDHAMVALEDELI.CO.UK

**Penrose & Partners
VETERINARY SURGEONS**

Upper Street
STRATFORD ST MARY
Tel: 01206 323414

"Friendly, Professional, Local"

Mon-Fri 8.45-12.30 & 2.30-6.30 (4.00 Wed)
Sat morning at Brinkley Lane

Consultations by appointment
Operating Theatre

Main Branch 70 Brinkley Lane, Highwoods,
Colchester 01206 842808
www.penrosevets.co.uk

Pest Solution

The answer to all your Pest Problems



Free advice and quotations

Rats, Mice, Wasps, Squirrels,
Moles, Cluster Flies, Bed Bugs,
Fleas, Moths, to name a few!

The Street, Raydon, IP7 5LW
01473 396807

info@pestsolution.co.uk
www.pestsolution.co.uk

DIY LIVERY

available at Lower Raydon

Barn style stables
Large paddocks
Manège
Cross country jumps



Call Graham on **07710 540926**
or email graham@ivc-ltd.co.uk

**THE BARN
VETERINARY PRACTICE**

Robert M Hill BVMS MRCVS

Wentham Road, Copdock, Ipswich
Tel: 01473 730213
2A Ashcroft Road (off Norwich Road), Ipswich
Tel: 01473 743460

Consultations by appointment
24 Hour Emergency Service

Monday-Friday: 8.30am-7pm,
Saturday: 9am-12noon.

Sunday: 10am-1pm (Ashcroft Rd only)

**MODERN DIAGNOSTIC, MEDICAL
AND SURGICAL FACILITIES ON SITE
CAR PARKING**

Surgical Operating Theatre • Ultrasound scanner
Radiography Department • Electrocardiography
Own laboratory for rapid testing • Endoscopy
Hospitalisation with isolation ward • Stabling



Kingsleigh Estate Agents

Sales and Lettings

Award-winning family-run,
independent agent

**Covering Dedham, Colchester, Manningtree
and surrounding villages**

- Fully immersive 360° tours
- Professional drone photos
- Bespoke Particulars
- Premium Rightmove listings
- 3D Floorplans
- Experienced, award-winning team
- Paid social media adverts
- Associate office in Park Lane, London

No lengthy contracts — zero week tie-in period

01206 940123

High Street, Dedham, CO7 6DE

sales@kingsleighresidential.co.uk

lettings@kingsleighresidential.co.uk

Follow us on social media for
sneak previews of soon-to-be
launched properties





Chapman Stickels

Suffolk and North Essex

Providing unrivalled local knowledge,
combining traditional service with
a modern marketing approach



Estate Agents • Lettings • Valuations • Land

chapmanstickels.co.uk

01473 372 372

info@chapmanstickels.co.uk

The Corn Exchange, Market Place, Hadleigh IP7 5DN

Part of Investeq Holdings Limited



STORAGE CONTAINERS TO LET

NOTLEY ENTERPRISE PARK
RAYDON
CO7 6QD

20ft. - £80 per month + VAT
40ft. - £140 per month + VAT

Let on Easy In / Easy Out Terms
Secure Site
24 Hour Access

Contact:

Nicholas Percival Surveyors

T: 01206 563222

E: info@nicholaspercival.co.uk



Contact us on
01206 299222
or drop by the
office

Located in the centre of the village of East Bergholt with a wealth of local connections and a broad approach to marketing property. We combine a strong friendly family lead team with National marketing and concise social media activity to best effect sales or lettings for our clients. Contact us to see what we can do for you.

Find us on Facebook & Twitter
www.grierandpartners.co.uk

Grier & Partners
LAND & NEW HOMES
For development land enquires contact
John Radford - john@grierandpartners.co.uk

Printed by K-D S, Chattisham. (01473) 652 354

BENEFICE CONTACTS, SERVICES AND EVENTS

Priest-in-charge: Rev'd Manette Crossman: Tel. 07947 737789
Email: revmcrossman@gmail.com

Curate: Rev'd Nicola Tindall: Tel. 01787 212340
Email: revnictv@outlook.com * **please note new email address**

Lay Elder: Sandy Ranson 01206 322156
Email: sandyranson29@gmail.com

Please contact Rev'd Manette if you would like to know more about Baptisms or Weddings, or if you need to arranged a loved one's funeral.

We are waiting for the Bishop to confirm a date for a **Confirmation Service in Higham** some time after Easter and we are hoping to start preparing for this in February. If you are interested in being confirmed, please get in touch with Rev'd Manette.

If you would like to receive Home Communion, please contact Rev'd Manette or Rev'd Nicola.



Regular updates about what is going on in our parishes can be found on the Benefice Facebook page:
<https://www.facebook.com/4-Marys-Benefice-111433503828636>

Benefice website: www.4marys.org.uk

Churchwardens:

Higham	Hugo Parker 01206 337234
Holton	Richard Noel 01206 298276 Paul Torrington 01473 312046
Raydon	Geoff Horrex 01473 310422 Simon Tennent 01473 310320
Stratford	Jonathan Dewey 01206 322148

Benefice Safeguarding Officer:

Frances Torrington: 01473 312046 familytorrington@btinternet.com

Sunday Services for February

Please check our Facebook pages and the 4-Marys website for details and updates. If there are any significant changes, those who are on our regular email contacts list will be notified.

Sunday 6th February 10am: Holy Communion Stratford St. Mary
4th before Lent

Sunday 13th February 10am: Holy Communion Higham
3rd before Lent

Sunday 20th February 10am: Holy Communion Holton St. Mary
2nd before Lent
4pm Sunday Hangout in Higham
(see separate notice)

Sunday 27th February 10am: Holy Communion Raydon
next before Lent
10am: Family Hour – SSM Parish Room

In our churches we continue to follow the guidance and Covid regulations issued by the government and the Church of England.

Being vaccinated does not offer full protection and you can still pass on the virus, but vaccination does protect many people from serious illness.

When meeting in church or in other places, please observe social distancing and respect that many wish to avoid physical contact such as shaking hands.

It is a legal requirement that masks are worn in church at all times. Please also use the hand sanitiser provided. All our buildings, activities and services have been fully risk-assessed, but please speak to Rev'd Manette, Rev'd Nicola or one of our churchwardens if you have any concerns.

If you feel in any way unwell, or you have a cough, a temperature, a sore throat or a runny nose, even if you don't test positive for Covid, please stay at home until you feel better.

Family Hour in Stratford St Mary - back at 10 am

Family Hour in the parish room on **Sunday, 27th February**. All are welcome to join us for this short family service, bible story and craft fun!. Breakfast (bacon rolls / juice / tea / coffee) served **from 9.30 am**. All best wishes from the Family Hour Team.



Sunday Hangout in Higham

A Sunday church group that will meet at various points throughout the year, aimed primarily at children, but open to any age! Sunday Hangout will be a time to create with others, a chance to learn something new and reflect on our faith.

An opportunity to hang out with friends, whilst getting involved in fun activities that the whole family can enjoy. Snacks and drinks will be provided. The next 'Hangout' will be at St Mary's Church, Higham on: **20th February 2022 from 4 - 4.45pm**. *Speak to Rev'd Manette, Rev'd Nicola or the Higham team to find out more!*

Monthly mid-week Communion service in Stratford St. Mary

A short contemporary service of Holy Communion in the Lady Chapel on 16th February at 10am.

Lent Study Group

We will be studying the Archbishop of Canterbury's Lent Book for 2022 **'Embracing Justice' by Isabelle Hamley**, starting the week beginning 7th March. Please let Manette or Nicola know whether you would like to join us and also whether you prefer a daytime or evening session. We will be ordering the books and the accompanying leaflet and it would be good to have an idea of numbers soon.

Benefice House Group

The house group will re-commence meetings on **Thursday 24th February at 2.30pm** at 5 Veyes End, Stratford St. Mary. Please contact Jonathan for more information at: dewey57jon@gmail.com

Benefice churches open

All our churches in the benefice are open every day for private prayer and for visiting.



Loving Lord,

We ask that Your light shine brightly through our children and young people. Strengthen them to be proud witnesses for Your kingdom and shining examples to all they meet. Help them to always walk in your Spirit and live by faith. We ask that we may, with them, serve you in the world with love and faith and hope. Through Jesus Christ our Lord.
Amen.

Prayer written by young people and commissioned by our Bishops

Please pray for all those who will be preparing for Confirmation over the coming months.

We pray for those who are in pain, distress and grief. May we hold the Christ light for them and be alongside them in their darkness. Please pray especially for those who have asked for our prayers:

Higham: Penny Watkins, Amanda Berry, Val Boothman and her family mourning the loss of Ian

Stratford St. Mary: Anna Marshall, Laura Kerry, the Ablitt family mourning the loss of Nancy.

Outside our parishes: Helen Gregory

We pray and offer thanksgiving for the life of Ian Boothman and all those who have died and are dearly missed. May they rest in peace and rise in glory, and may those who mourn them be comforted in their grief.

Please check on friends and neighbours who may be struggling this winter.