

# 400

*Your  
resource  
for  
everything  
local*

SHOP  
LOCAL

**December 2021**  
Issue 400

# Quartet

**The Parish Magazine**

For Higham, Stratford St Mary, Raydon and Holton St Mary





### FOR SALE

Beko under counter white fridge. Excellent condition, only used for a year. £50  
84H x 54.5W x 59.5D cm.  
130 litre capacity.

Please call 01473 311565



### Help us with our campaign!

If you know any merchant or service provider living in one of our four villages, please let us know by emailing [quarteteditor@hotmail.co.uk](mailto:quarteteditor@hotmail.co.uk). We will contact them and see if they would like a **free listing** in the Quartet

## Small Ads Pin Board

No charge for non-commercial ads placed for one month only, space permitting. Email [quarteteditor@hotmail.co.uk](mailto:quarteteditor@hotmail.co.uk)

## Quartet Diary



Details of events can be found within the magazine. **Please check with organisers re. December events - there may be changes to regular events that we don't know about.**

### December

- 1 Raydon Club
- 3 HSM Lunch Club  
HSM Social Club
- 4 HSM Green Gym  
HSM Christmas Prep  
Phoenix Brass Concert, Raydon
- 8 Raydon Club
- 10 HSM Social Club
- 11 HSM Christmas Prep
- 15 Raydon Club
- 16 HSM Slow Stitch
- 22 SSM Coffee Morning
- 31 New Year's Eve at Raydon Sports and Social Club

### January 2022

- 5 Raydon Club
- 7 HSM Lunch Club  
HSM Social Club
- 8 HSM Green Gym
- 12 HSM Parish Council Meeting  
Raydon Club

- 14 HSM Social Club
- 19 Raydon Club
- 20 HSM Slow Stitch
- 21 HSM Social Club
- 25 Raydon Fair Trade Coffee Morning
- 26 Raydon Club  
SSM Coffee Morning
- 28 HSM Social Club

### February 2022

- 22 Raydon Fair Trade Coffee Morning
- 24 R&DCG Meeting

### March

- 9 HSM Parish Council Meeting
- 22 Raydon Fair Trade Coffee Morning
- 26 R&DCG Meeting

### April

- 9 R&DGC Spring Show (TBC)
- 13 HSM Annual Parish Meeting
- 19 Raydon Fair Trade Coffee Morning



# Editors Corner



It's a double celebration this month as we not only pull the stops out for Christmas, it's also our 400<sup>th</sup> edition!

The Quartet magazine grew out of the bi monthly Parish Church newsletter that circulated until August 1988. Technology has come a long way since then and next month, when the Quartet pages aren't so full of Christmas festivities, we'll introduce you to a few back copies from those days that a Holton St Mary resident let us copy from his archive (Thanks Dave!). We hope this edition of the Quartet gets you in the festive mood and you'll find events near you that will help you celebrate Christmas.

Please have a look at Sally's article on page 7. It's a plea to consider the County Broadband offer to install a new future proofed fibre network to our villages - at the end of the day, it's your decision, but I (Anne) will add my voice to Sally's and say please pre-order this and make it happen!

Just a quick reminder that the January edition of the Quartet goes to the printers effectively on 19<sup>th</sup> December. It will be unlikely we can accommodate any late entries, so please get things to us in good time!

Happy reading and Happy Christmas!

Anne and Jane

Articles for the Quartet are included if we have room, and if, in the opinion of the editors, they are of general interest to our readers. Please remember all articles will be subject to editing. We prefer you to contact us via email where possible.



Copy deadline for next edition:  
**19<sup>th</sup> December 2021**

**Contact details:** Email:  
quarteteditor@hotmail.co.uk

**Editors:**  
Anne Priestley; 1 Corpus Christi  
Cottages, Holton St Mary. CO7 6NN

Jane Lelliott; 5 Swan Meadow, Stratford  
St Mary. CO7 6JQ

**Distribution:** Dave Leach  
07930390517

**Invoicing:** Jenny Leach  
quartet.advertising@gmail.com

# Rev'd Manette Writes



Dear friends,  
As I write, Covid is taking hold again in Europe and we don't know what lies in store for us. With families travelling home and more time spent indoors, this may provide a breeding ground not just for Covid, but also for seasonal flu and viruses. These are expected to be more serious this year as we have little immunity due to lack of exposure last year. I encourage you to take precautions in line with government recommendations and to stay at home if you feel in any way unwell.

**Advent** is the beginning of the Church year in the Western Christian Churches and this year Advent Sunday falls on 28<sup>th</sup> November. As Advent begins, we embark on a time of expectant waiting and preparing for the celebration of the birth of Jesus at Christmas. The word Advent is an anglicized version of the Latin word *adventus* which means 'coming' – the coming of the Christ child, Immanuel, God with us.

I remember that as a child I couldn't wait to open the first little door on the Advent Calendar, for behind it a little image and, of course, a chocolate would be revealed. We count down the following 24 days until Christmas, and whether you mark this time with a calendar, with candles or an Advent wreath, or by getting the nativity scene down from the loft, Advent is first and foremost a time of prayer and preparation. But these last few weeks before Christmas always seem to be among the busiest of the year, and instead of preparing ourselves spiritually we are caught up in a whirl of practical preparations. If you have

young children or grandchildren, the younger ones (and perhaps the young at heart) can't wait for Christmas morning to arrive when they expect to find their stocking and presents. Yet the Gospel stories of Advent remind us of a young mother awaiting her baby's birth, while a whole nation looks for the coming of a new king, the Messiah. Let this be a reminder to us to prepare ourselves for this wonderful event which we recall at Christmas – the birth of our Saviour Jesus Christ.

Join us for an **Advent Reflection with Rev'd Joyce Willis on the theme of 'Hope' on Thursday, 2<sup>nd</sup> December, 10-2pm in the Lady Chapel in Stratford St. Mary.** Please contact me for more details and if you would like to attend.

Bishop Mike will be leading a 4-part Advent course, looking at spiritual disciplines for a deeper formation in Christ. Bookings via [lesley.steed@cofesuffolk.org](mailto:lesley.steed@cofesuffolk.org) or <https://adventcourse-2021.eventbrite.co.uk>

Join us for one of the services during Advent and Christmas - details can be found on the centre pages of this magazine.

I wish you a good Advent Season, a very Happy Christmas and every blessing and good health for 2022.

Yours in Christ, Rev'd Manette





# Stratford St Mary



## In Stratford

Hall Farm Shop Cafe and Restaurant  
www.hallfarmshop.com

The mobile pizza co - 07982 427483

ABC Preschool - 01206 322466

Kate Baines, Virtual Assistant - 07799 391343

Orwell Electrical - 01206 322969

Andy Smith Roofing - 01206 322882

Jackson Plumbing and Heating -  
01206 322063

Nigel Bruce Electrician - 01206 322751

Penrose and Partners - Vets. 01206 323414

Finest Gardens - 07756 364560

John Burrell Bespoke Bedrooms -  
07734700507

Nexus Creative Print Production -  
gill@nexuscpp.co.uk

tim germain - furniture designer-  
maker. www.germain.co.uk

## Church maintenance update:

Our next fund- raising projects will be focused on replacing the pew cushions and upgrading the lighting, by replacing the existing bulbs in the nave and side aisles with LED bulbs.

The pew cushions are in a very sorry state of repair and our current light bulbs fail frequently and need to be regularly replaced.

As always, the PCC would be extremely grateful for any donations towards the cost of these projects - every little helps. Thank you.

Sandy Ranson, PCC secretary.



## STRATFORD ST MARY INSTITUTE HALL

Please note that requests should be made through the bookings email address: [ssminstitute.bookings@gmail.com](mailto:ssminstitute.bookings@gmail.com) Information supplied to book should include a name with contact details and the nature of the event.

This results in a natural queuing system which ensures that first come is first served. I check this address every day and will respond accordingly.

Steve Kite  
42 Strickmere  
Stratford St Mary, CO7 6YG

## Broadband

Sally Thurlow, a Parish Councillor in Holton St Mary, writing in a personal capacity and relevant to most readers of Quartet

Many will be aware that "County Broadband" has been promoting faster fibre broadband to our community. With the deadline for decisions approaching I wanted to set out facts and my thoughts in the hope it will encourage more of us to sign-up and dispel misunderstandings. Yes, I am an advocate and that is why I am writing in a personal capacity.

If you contract with *County Broadband* your copper-wire will be replaced with a fibre cable **to your building**, delivering the permanent choice to receive much faster internet; so-called gigabit delivery (the fastest deal is 900 megabytes per second, guaranteed minimum speed) If you have looked at the literature you will see that if you sign up for the very competitive lowest level on offer from them, you can elect to dial back down to 50 if you do so within the first six months of your 24 month commitment to keep the cost at £28 per month for the duration. 50mbps is still a dramatic improvement over what most actually receive. The big advantage is that the installation and router are free and done. Just this once. If you change your mind after this, it will cost over £300 for installation and router (based on today's price). If there are roads (or buildings set well back from the road) in our community where nobody signed up, that may cost more as they will only build links to locations pre-contracted for their infrastructure.

The vast majority of us receive our broadband and landline services via old BT Openreach infrastructure (with exceptions; satellite phones, mobile masts, new housing developments). The majority of us live in established housing that has copper wires connected overhead to our buildings. Existing services are fibre to the cabinets, whatever BT calls it.

Openreach rollout of fibre to the premises will still stop at the telegraph pole. If you elect to stay with Openreach infrastructure (not your internet service provider, we are talking fibre and wires here), you will still have that with its speed limitation of 80mbps that degrades over the length of the shielded wire, even after removal of the cabinets to which fibre is connected. 80mbps is the maximum speed that copper can support. The fastest anyone gets over copper wire is less than this - and anyone lucky enough to receive 35-80 will think themselves very lucky and may think that is all they will ever need.

However, you might have seen adverts for the new *Sky Glass TV*; the first wholly internet "TV". In the same way that the internet has changed the way we communicate, shop, communicate and manage our bills and banking, the future of televised broadcasts is changing. Maybe you don't consume your services via streaming services yet, but you are likely to do so in the future, and in the same way we moved from analogue to digital, I predict this too will change and the old TV aerials will become redundant and the transmitter masts will eventually be removed.

Maybe "it's not for me" but the future residents of our villages will thank us if we have taken this great leap forward. I know when we moved here (2004), the biggest sources of relief to us were no dial-up modem for internet access, and our predecessors had connected to mains drainage when it was offered (for which we thank them!). Had they not done so, it is questionable whether we would have bought this house.





## SUFFOLK HISTORIC CHURCHES TRUST ANNUAL BIKE RIDE/STRIDE – SAT 11<sup>TH</sup> SEPTEMBER 2021

Money from sponsors has now been collected and the total achieved by bikers and donations this year was **£1605.00**. Half of that sum will go to St Mary's Church and the other half will be held in a central fund, from which churches can bid for help with projects and repairs.

Bill D achieved visits to 33 churches, covering 94 miles in the allotted time.

Once again, thank you to the bikers and financial sponsor and helpers in the church. Your support is much appreciated.

David Isaac



### Parish Room

At last we are open for business, subject to any government restrictions of course.

Please contact John Taylor on 01206 323908 for details and to book.

### Coffee Morning

We have recommenced the monthly coffee mornings (Ed- Every fourth Wednesday I believe)

**at 10.30a.m. in the Parish Room.**

Do come along and socialise at £2.50pp

### Winners of SSM 100 Club

The £50 winner is  
Tim Germain ( no 54 )

The £10 winner is  
Steve Garthwaite ( no 98 )



### Appeal to Residents of Stratford St Mary

It has come to my attention that there have been attacks on peoples houses and vehicles in Stratford St Mary, which usually occur after dark and into the small hours. These range from houses being covered in eggs, doors and windows being hammered on and vehicles damaged. I have good information that a group aged between 16-18 yrs old are carrying out the attacks. My appeal is simple, if you are a parent and have a Son or Daughter who you know is out during the dark hours, please talk to them, ask them if they know who it is, make them aware that this sort of behaviour is not a good course and will only lead to further trouble and stress for all.

If you are one of the people carrying out the attacks, just stop and consider, what's the point of it all, what gain will you get apart from a criminal record and people not wanting to give you a chance in the future. You have the majority of your life ahead of you, the choices you make now may well affect the rest of your life, so make some good ones and give yourself a chance, there really is no future in your current actions.

Please just stop what you are currently doing.

A concerned resident.



### Want to grow your own fruit and veg?

Dedham Allotment Association has plots available from £13.00 pa.

(Stratford residents only)

For more information contact Diana.

email: [dedhamaa@btinternet.com](mailto:dedhamaa@btinternet.com)



### POPPY DAY APPEAL – 2021 (STRATFORD ST MARY)

The 2021 Royal British Legion Poppy Appeal in Stratford St Mary has raised £1682.94 so far.

Thank you all very much for your donations to this worthy cause. Your generosity is much appreciated.

David Isaac



Stratford St Mary Primary School are collecting the 'Book for Schools' tokens which appear in the Ipswich Star and East Anglian Daily Times, from Saturday 16<sup>th</sup> October 2021. Every participating school will win £100 worth of books. The school that collects the most will win £1,000 worth of books and two runner ups will win £500. If you have any tokens please drop them off at Stratford St Mary Primary School.

Thank you for your support.



**Dear Resident**

**Do you...**

- ♣ *Want to help reduce the speed of vehicles within our community?*
- ♣ *Want to make our village a safer place to live?*
- ♣ *Have some spare time?*

Community Speed Watch makes a valuable contribution to road safety within our village and we are looking for additional volunteers to help make our village a safer place to live .

The police provide a level of reassurance and enforcement but officers cannot always carry out speed enforcement checks in every location that requires them.

**So, if you are able to spare 1 or 2 hours per month of your time**, why not get together with like-minded members of our community and provide a visible presence to help reduce speeding and use speed detection equipment to report speeding within our village,.

**Interested in joining?**

**Please contact:**

**Bill Davies tel: 01206 322990**

**or email: [billdav@hotmail.com](mailto:billdav@hotmail.com)**





## Merry Christmas and a Happy New Year

Donations have been made to Stratford St Mary Church in lieu of Christmas Cards

# Higham





**SHOP  
LOCAL**

## In Higham

Brett Valley installations - Oil boiler servicer - 01206 337316

HC Smith Builders - 07468 456772

Derek Allen Fresh Fish (Thursdays) 07967 755771

Rmk Chisnall - mower repairs 07557 771721



## Give Covid and Flu the cold shoulder this winter

Health leaders across Suffolk and north east Essex are urging the public to help the NHS by using the right service and to get fully vaccinated against the dual threat of Covid and flu ahead of what is believed to be an unprecedentedly tough winter.

Clinicians say admissions to hospitals have significantly increased in recent days – with the sickest patients being those individuals who are unvaccinated against Covid.

There has also been a big rise in the number of people attending local A&E departments for non-life threatening conditions.

Leaders say patients should continue to come forward for care and to speak to a pharmacist, GP or call 111 if they need urgent advice as soon as they feel unwell.

NHS 111 online can also direct patients to urgent treatment centres and walk in clinics, GP surgeries, pharmacies and emergency dental services and, if needed, a call from a healthcare professional.

The online tool can also advise whether a patient should contact their GP, visit a pharmacist or call 999, while if needed, people can receive a call from a healthcare professional.

Neill Moloney, Acting Chief Executive of East Suffolk and North Essex Foundation NHS Trust, which runs Ipswich and Colchester hospitals, said: "These are not normal winter pressures – we are not usually in this position with this level of demand in early November.

The Covid walk in clinics are listed daily on the Suffolk and North East Essex Vaccination Service website – [www.sneevaccine.org.uk](http://www.sneevaccine.org.uk).

The website also has further details about staying well this winter.





# Raydon



## In Raydon

Blackwell Barn Holiday Let -  
www.cottages.com

Phil Avery Electrician 01473 311261

Ashley Short Carpentry 01473 311226

Gordon Short Decorator 01473 313053

SW Stiff Builders - 07811 005241

Earth&Turf Garden Services -  
07922078241

DIY Livery - 07710 540926

Infusion Grill - 07584 573474

Swift Garden Services - 07947 322429

Rheal Coatings - 07539 377740

Franklyn Nevard - Architect 07515  
351894

Fresh Eggs - Roadside stall Fox Farm

Katies Little Beauty Box - 07802  
847628



## Fair Trade coffee morning

Our November Fair Trade coffee morning was again another lovely sunny day, this time however, very cold as well so we were

inside the Church. Geoff is a master with the tables though and they were all "socially distanced" to allow everyone to sit and enjoy our lovely "Fair Trade" coffee and the fabulous "Frinton" treats.

It was non stop with the coffee pot and we had to bring in reinforcements in the shape of cafetieres and people to operate them! We had nearly 40 people arrive today, some venturing out for the first time since lockdown and it was so good to see them again. It was also really nice to see some mums with pre-school children, we have little chairs with books and toys ready for them to play with, so we do hope they will come again and join us for our Christmas Fair Trade coffee morning, which is actually on November 30th.

The "Christmas Tree Man" from Raydon has again donated one of his lovely trees to the Church. We are planning to have it all set up and ready for the big "Switch On" at the coffee morning, along with our usual selection of festive food. We hope some of the little children will be with us and can help with the last decorations on the tree, there might be some little chocolate treats for the helpers as well, so hope we might see you.

It is also just a few days before our **Phoenix Brass Band** concert which is presenting music from the Roaring Twenties, tickets are selling quickly so buy

yours as soon as you can as numbers are limited this year due to social distancing and the virus. Call Simon on 01473 310320 for yours.

We now have a rota for operating the "coffee pot" which will see a different person each month in charge, I'm looking forward to being able to sit and chat with many regulars and visitors, without having to fit conversations in around pouring coffee. Do hope you'll be able to come and don't forget the "Love Refills" is here between 10am-11am and the Library Van from 9.50-10.20

Thanks to everyone for your continued support, see you on November 30th 10am-11.30am

Wendy Mumford 01473 312123



## WOULD YOU LIKE TO JOIN THE PARISH COUNCIL?

Following the resignation of a Councillor for personal reasons, we have a vacancy on the Parish Council. We would like to invite applications from anyone interested in becoming a parish councillor – no previous experience is necessary but you must meet one of the following criteria:

- be registered as a local government elector for the parish;
- have occupied land or other premises in the parish for at least 12 months;
- have worked in the parish for at least 12 months;
- have resided in or within 3 miles of the parish for at least twelve months.

The insert in this issue of Quartet gives more information about the Parish Council and the process for applying – the closing date is **Friday 17 December 2021**.

So, what are you waiting for?! We look forward to receiving your applications.

Jane Cryer, Parish Clerk, 07920 713940/  
raydonpc@gmail.com

## Raydon St Mary's Plant Stall.

I would like to say a big THANK YOU to everybody who has given plants, and other things to do with gardening this year. All funds raised help to keep our Church in good order.

The Plant Stall is now closed for winter. It will re-open in March 2022.

Daphne Horrex.

## In Memory of the Year

January's call, cold and clear, Proclaims the start of another year.

Could we but leap from February raw, and break the rule of one in four.

Come March, blow away the web of Winter—Then let April enter, To wake the velvet mole and give life to seed and soul.

Soft misty morns of May brings meadows deep in hay. June – time flies, fast and free, Upon the wing of hurrying bee,

Till July's long evenings draw her Summer veil, and swallows soar over fields of ripening corn.

August comes, it's harvest born – With golden grain caught hard and heavy before the rain.

Sweet September softly calls – The crimson apple to her falls.

October to Autumn yields her fallow fields, Leaving crowds of rushing leaves to ride Upon November's stormy tide.

This passing year remember As the flowing decanter in December Pours almost all the year away, on Christmas Day.

I was first read this piece when 7 years old in 1952 by my Dad (a Suffolk countryman) It still rings true in 2021. Geoff.



# Raydon and District Garden Club



Another month passes by and soon to be followed by another year. The last twelve months certainly seem to have gone by quickly, and with all the restrictions for the first quarter of 2021 it has shortened the year considerably from a point of doing what we like to do. Visits to Winter gardens (mostly closed) so became a non event, and Spring time whilst always a joy to look forward to was also limited to our own gardens. As a club we had to cancel meetings, the Spring Show & Summer Show which was very sad. Then things began to slowly improve and thank goodness we were able to open the club meetings once again from September. We had two good meetings in September and October and hopefully the November AGM / Social evening was able to go to plan.

Expect most of you will be thinking about Christmas with more enthusiasm than last year, but of course caution (Covid still out there) still plays a part especially if having parties etc. A low key Christmas for us again this year, and you know I quite like it, far less hassle. Able to have a drink or two and not worry about driving, enjoying enough but not to indulge with over eating, having a snooze after dinner without upsetting anybody. Just sometimes simple is great.

Christmas week is time to get out in the garden to do jobs like covering up the rhubarb crowns to protect them from frost. Also we like to hunt around and look for the first signs of regrowth of the snowdrop shoots starting to show, along with daffodil shoots, as well as other winter flowers coming out to brighten up the dreary days and it gives you that happy feeling of Spring to follow.

As far as the club is concerned we are of course on our winter break until February when we re-start club meetings and look ahead to Spring Show in early April. Your

committee will be meeting in January to finalize the 2022 programme of speakers and arrange garden visits to look forward to. Anybody who has not yet paid for full membership please note the February meeting is the deadline for joining to achieve full benefit. Membership fees were raised at AGM to £15.00 per person. One off attendance to meeting raised to £5.00 pp on the night. These increases are necessary as guest speaker fees plus fuel costs average out at £100.00 per meeting. If any members are able to give us a slide presentation/ talk and save the club substantial fees would of course be extremely welcome and of course it could be a gardening subject not covered before !!!!!. Has anybody lived & worked in gardens abroad for example ? Please contact any member of your committee to discuss and see when we could fit you into the programme.

At our November AGM meeting Mrs Natalie Finch stood down as Club President after many years service to our club. A vote of grateful thanks followed by a presentation of a gift voucher for "Place for Plants" East Bergholt was given to Natalie. In the past Natalie has also given a few talks to our club and always combined a sense of humour to make for a fun evening.

To start off 2022 we have a new President, and New Vice President, and also a change of treasurer (due to workload & family) but more about this next month.

May I on behalf of all the club committee wish you all a Happy, peaceful Christmas and New Year. See you all in February to start our 42<sup>nd</sup> year.

Geoff Horrex.  
01473 310422  
/ 07810086143

41<sup>st</sup> Year



An Evening of Music from



**MUSIC BY PHOENIX BRASS BAND**  
**PERFORMING AT**  
**ST MARY'S CHURCH RAYDON**  
**SATURDAY 4 DECEMBER 2021**  
**AT 7.30PM**

TICKETS £10 EACH, LIGHT SUPPER & WINE INCLUDED,  
 AVAILABLE NOW FROM **01473 310320**  
 IN AID OF ST MARY'S CHURCH



## Raydon Club

The Raydon Club has now re-opened at the Pavilion on Wednesday evenings and is operating in a COVID-secure manner. The bar opens at **8:30pm** and will close promptly at **11pm**. A good selection of beers, wines and spirits are available at considerably less than pub prices.

Membership is open to all residents of the village (over 18s only) and anyone wishing to join is welcome to come along to enjoy a socially distanced drink and chat.

A row of colorful Christmas ornaments including gold, silver, red, and blue spheres, some with green holly leaves and berries.



# at Raydon Sports & Social Club

31<sup>st</sup> December 2021  
7.30pm-12.30am

Includes:

- DJ & Disco
- Chip shop supper
- A glass of Prosecco at midnight.

Tickets cost £15 – on sale until 22<sup>nd</sup> December.

Entry by ticket only. Open to non-members. Over 16s only.  
Contact: raydonclub@gmail.com

**Suitable raffle prize donations always welcome!**



The Raydon Pavillion is for hire

Fully carpeted room for up to 80 people  
Kitchen and preparation room  
Easy parking

Available morning, afternoon, and evening.

For Details Contact Mark Smout  
Tel 07748 842750 or email  
[marksmout@gmail.com](mailto:marksmout@gmail.com)



We have around 7,000 Nordmann Fir and Norway Spruce trees available.

Put your wellies on and come along to  
choose your tree.

Tag-it in Oct/Nov for collection/delivery  
at a later date.

Potted trees and wreaths available.

Find us on Facebook  
fb.me/Raydonchristmastrees



**From £6  
per ft**



### Opening Times

October 2021							November 2021							December 2021						
Sun	Mon	Tue	Wed	Thu	Fri	Sat	Sun	Mon	Tue	Wed	Thu	Fri	Sat	Sun	Mon	Tue	Wed	Thu	Fri	Sat
					1	2						3	4				1	2	3	4
5	6	7	8	9	10	11	5	6	7	10	11	12	13	5	6	7	8	9	10	11
18	13	12	13	14	15	16	14	15	16	17	18	19	20	12	13	14	15	16	17	18
17	18	19	20	21	22	23	19	20	21	24	25	26	27	19	20	21	22	23	24	25
24	25	26	27	28	29	30	26	27	28					26	27	28	29	30	31	
31																				

■ OPEN 10-4

• OPEN 9-4

W : raydonagricultural.co.uk  
E : christmas@raydonagricultural.co.uk  
M : 07515472742

A : Blackstump Cottage, Woodlands Road,  
Raydon, IP7 5QD  
Near Raydon Railway Walk



# Holton St Mary



SHOP  
LOCAL

## In Holton

Love Refills mobile shop -  
www.loverefills.co.uk

Ann Mason Care - 01206  
233372

## Holton St Mary Village Hall

The Hall is back in use and taking bookings again. Please contact Tanya Kunz on 01473 311570



## Slow Stitch

The Slow Stitch group is meeting again on the third Thursday of the month at 2 - 4pm in the Village hall, Holton St Mary. Whether you sew, knit, crochet, embroider, or enjoy tapestry, you are all welcome to join our drop-in group. We are not providing refreshments at the moment but you are welcome to bring along a cup of tea.

The aim of the group is to take our time as we enjoy stitching and we are happy to help beginners. Thank you for all the donations of wool that the group have received this summer. This is much appreciated as we complete a number of community projects to support the Marie Curie charity and Women's refuge in Ipswich.

For more information contact Jeanette Appleton 07768418942



## Holton St Mary Lunch Club

If you are looking forward to good food and good company again, please sign up by either calling or emailing me so we know how many to cater for

Many thanks

Sally Thurlow - 07721 625313 or  
salthurLOW@gmail.com



## HSM Social Club

Every Friday in the Village Hall 17:30 to 22:00. New members always welcome  
If you want any further information contact Bob Holmes  
Email bobholmes55@icloud.com  
Tel No 07966 266293

## Holton St Mary Christmas Preparations sessions

Following on from previous years when we have had wreath making sessions, we are offering a few more sessions, coming together in the Village Hall to learn new skills or just do the planned activities as a group, over a few Saturdays in November and December. Materials will be provided.

These will take place in Holton St Mary Village Hall as follows:

### Saturday 4th December

3. Wreath-making and wreath-making tutorial -Jan, our resident trained florist, will be on hand to teach those who have not done this before,
4. and those who have made before can come and make our Christmas door wreaths, with the wreath-rings and wire, decorative ribbons and moss, all included - you bring your own choice of vegetation, baubles etc. This will include some small refreshments; a festive glass of something lovely.

2 sessions, morning and afternoon, times as above each session limited to 12 places, mixing novices and more experienced makers £15 each

### Saturday 11th December

5. 11-1pm Making a decorative table centre for your Christmas table. Again, all the bits except your vegetation will be provided (but of course you are welcome to bring anything you want to feature on your own table) and one of our resident talented flower arrangers will demonstrate how to do this. A glass of something festive and something to nibble will be included - limited to 12 places £15 each

6. 2-4pm Christmas Cocktails. Our experienced cocktail maker(s) will be talking you through some festive cocktail and drink options, traditional and modern - and there will be three cocktails included

for you to try. One sour, one sweeter, and one creamy. Subject to numbers, you may be asked to bring a glass or two with you, and maybe some equipment. If there is a particular cocktail you want to know about (possibly try), please give advanced notice so we can cover it. £20 each (we may be able to accommodate a few more for this session).

Contact Sal Thurlow  
salthurLOW@gmail.com 07721 625313 or 01473 312080 to book your place and say which session(s) you want to attend. I also do messenger and WhatsApp if you prefer these (open to non-residents too).



## Holton St Mary Millennium Green Trust

The last 3 draws of the year were made at the November First Friday of the Month Lunch Club and the winners were:

### October:

£30 No 48 Carol Blaxland, £15 No 70 Ann Shirley, £10 No 109 Peter Cheng, £5 No 98 Sheila Morgans, £5 No 1 Caroline Favell

### November:

£30 No 9 Pam & Tudor Quare, £15 No 103 Dave & Jackie Gregson, £10 No 77 Ron Hood, £5 No 62 Sheila Stiff, £5 No 65 Graham Plummer

### December:

£30 No 128 Babelle Duvoisin, £15 No 30 David Hales, £10 No 106 Dot Steeds, £5 No 40 Phillip Baldry, £5 No 99 Steve & Clare Lyes

Subscriptions for 2022 will be due in January, £12 for the year. A Trustee will contact participants to arrange payment. Thank you all for your support during 2021.

Marjorie Haste, Secretary



## Holton St Mary Christmas Greetings 2021



Prosperous New Year ☆ Peace and Joy  
Merry Christmas ☆ Season's Greetings  
To old friends ☆ Best Wishes

Rev'd Nicola  
Pam & Tudor  
Trena & Brian  
Sylvia Golding  
Chris & Marjorie  
The Russell Family  
Peter & Jan Cheng  
Sally, Geoff & Sam  
Sally, Peter & Archie  
Ron & Daphne Hood  
Chris, Bid and Archie  
Erik, Naomi and Coco  
Bill and Anne Priestley  
Peter & Eileen Starling  
Diana & Michael Wilson  
Oliver & Antonia Greene  
John, Paula, Seb and Lexi  
David and Sheila Morgans  
Liz, Chris and Maddie Sims  
Keith, Karen, Tazmin and Isobel  
Paul, Frances, Dom, Martha and Lydia



Happy Christmas  
and a  
Happy & Healthy  
New Year

Donations have been made to Holton St Mary  
Church in lieu of Christmas cards

## SESAW NEWS

It's time to thank all the wonderful people who have supported SESA W in so many different ways over the last twelve months. Those who care for the animals, carry out maintenance, organise fundraising, donate handmade or purchased items, visit our stalls at outside events to mention but a few. Your efforts ensure the charity continues to care for animals in need.

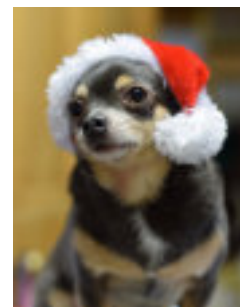
We hope to hold sales again in 2022, assuming no Covid restrictions prevent it. Please leave a message on our ansaphone or email if you would like to help at events. Applicants to help with animal care are also welcome if you can commit to one morning a week.

Copies of Frank Payne's book, "Here Today, Gone Tomorrow" are still available, an ideal Christmas present when combined with the next instalment of the Author's biography, "Well Worth Waiting For". Frank details his wartime childhood, National Service leading to his career as a Sports journalist. Phone 01206 263006 to order the two volumes for £10, all proceeds to SESA W.

We do not rehome animals over the Christmas period so we will be closed from 10th December to 10th January 2022 except for emergencies. One last big thank you to your Editors, Anne and Jane, for giving us a voice. Season's greetings to all our readers from my feline friend, Ollie and me, Kenny (the Boss) Chihuahua.

**Suffolk & Essex  
Small Animal  
Welfare,**  
Registered  
Charity  
No.1124029,  
Stoke Road,  
Leavenheath,  
CO6 4PP. Tel:  
01787 210888

[www.sesaw.co.uk](http://www.sesaw.co.uk)



## A happy Christmas for the birds

As we make our festive plans, why not factor in a treat for the birds. In winter, life can be hard for all wildlife – days are short and for many creatures finding enough food to survive takes up almost every hour of daylight.

As well as regular clean, fresh water and food, what better gift could you offer hungry birds than an edible Christmas wreath? The gift will also hopefully provide you with a chance to watch them up close and personal. You may even attract species such as waxwings that are only around in the Winter months as they visit from colder climes in search of berries.

### To make a wreath, you will need:

Pines cones  
Long twigs  
Garden wire  
Soft lard  
Mixing bowl  
Holly and other leaves  
Bird seed, breadcrumbs and grated cheese  
Dried fruits or unsalted nuts

### Making the wreath:

Twist together bundles of long twigs and fasten with wire into a ring.  
Squish lard into a soft paste in a bowl.  
Mix in bird seed, breadcrumbs or grated cheese.  
Smear over pine cones and decorate with dried fruits, nuts and berries.  
Attach the cones to the ring with twisted wire.  
Decorate with festive greenery and hang up your wreath!

Remember also to keep birdfeeders and bird baths clean to prevent disease and parasites spreading; and ensure your bird food and tidbits, like your new wreath, are topped up regularly over the winter months – a constant supply will bring a steady stream of visitors. Enjoy!

[Claire.rowan@suffolkwildlifetrust.org](mailto:Claire.rowan@suffolkwildlifetrust.org)



## DEDHAM PLAYERS FOR DEDHAM

The Dedham Players have not staged any productions at The Assembly Rooms since October 2019. The pandemic prevented any attempt at staging a show during 2020 and 2021. Following the shutdown of last year it has become apparent to the members of the Dedham Players committee that there is a need to reflect on the future of the group. We feel we are at something of a crossroads in considering the way forward and in our ability to stage further productions at Dedham.

When the Dedham Players was formed (more than 50 years ago in its present format) there was a wide pool of talent residing in and around Dedham enthusiastic to join in activities both on the stage and behind the scenes.

In the past we have been able to recruit Dedham residents to help out in meaningful ways, not just on the production being staged, but also the running of the group. However, as the years have gone by there has remained only a small core group of people to keep the Dedham Players going.

The Dedham Players committee is continuing to meet and reflect on whether we can successfully mount a production in the future. We now have to admit that unless there is meaningful involvement from persons willing to join and help to shape the future of this once vibrant group then the task will become increasingly more difficult and ultimately unworkable.

The Dedham Players is at risk of disappearing if we are unable to recruit new members to help us run our club.

The current committee believes the community wants to continue to have a drama group in the village, but we do not know if this is the case. The question has to be asked – should the Dedham Players continue?

If the answer is 'yes' then we need willing new participants to step forward. Could you be one of those?

If it is 'no', then we will ultimately have no choice but to roll up our stage curtain and close.

We would like to hear your views.

Please contact either by email or phone:

David Thompson (Chairman) at [DavidBThompson58@gmail.com](mailto:DavidBThompson58@gmail.com) 01206 393711 or Rachel Culley (Secretary) at [rachel.culley@btinternet.com](mailto:rachel.culley@btinternet.com) 07850 942647



### Anyone for tennis? Join us at Dedham Lawn Tennis Club!

Whether you've never held a racquet or are a budding Cameron Norrie or Emma Raducanu, we'd love to welcome you to our friendly village tennis club on the playing fields in Dedham.

With club sessions, teams in local leagues, coaching for adults and juniors and a wide range of membership options available, we're always on the lookout for new members. Play continues throughout the winter & subs have just been reduced.

Search online for Dedham LTC to find out more and see how you can get involved.



**FREE**

## Talks

**for Community & Social Groups**

We can offer an online version or socially distanced talks - please get in touch to discuss options.



Contact Paige at  
Dogs Trust Snetterton  
E: [paige.pope@dogstrust.org.uk](mailto:paige.pope@dogstrust.org.uk)  
T: 01953 497912



## Hello from Dogs Trust!

Your local Dogs Trust branch at Snetterton would like to briefly make you aware of a few services that we provide free of charge:

The first, our Canine Care Card scheme, is a free service for dog-owners whereby, in the event of their death or illness, we will look after their dog, providing them with all the care they need until we can find a responsible, loving new home for them. This is often a great concern to the elderly, as their dog may be their only friend and companion – Dogs Trust can give them peace of mind, knowing that their canine companions future is safe, should the worst happen to them. Every year, we care for more than 14,000 dogs at our nationwide network of rehoming centres and we never put down a healthy dog

Secondly I wanted to make you aware that we provide free talks to local community groups. I cover the whole of the East

Anglia region, to talk about the varied work of Dogs Trust, where we come from and where we hope to be in the future. There are no speaker fees or travelling expenses so please let me know if you believe that your local club would be interested.

If anyone has any further queries, or would be interested in booking in a talk, please contact me by emailing [emily.matthews@dogstrust.org.uk](mailto:emily.matthews@dogstrust.org.uk) or phone 01953 497912.



## stour valley **U3A** learn, laugh, live

The u3a is a national organisation promoting life-long learning for those who no longer work full-time. In our Stour Valley branch we have nearly 40 active groups offering a range of activities and learning experiences to keep our minds active, whilst offering friendship and fun.

We encourage members to share their skills or enthusiasms by offering to convene new groups and you can join as many or as few groups as you like.

Monthly meetings and lectures are always popular. On 12th January, Geoffrey Kaye enlightens us on Death, Sex and Drugs - The Pre-Raphaelite Brotherhood.

See our website for further information [u3asites.org.uk/stourvalley](http://u3asites.org.uk/stourvalley).



## Holy Family Roman Catholic Church

Ipswich Road, Brantham CO11 1TB  
Parish Priest: Fr. Paul Vincent OCD Assistant  
Priest: Fr Bineesh Elenjikkal OCD  
180 Hawthorn Drive Ipswich IP2 0QQ T e l :  
01473 684963. www.stmarksparish.org.uk

The weekly Newsletter, with Mass times, is always displayed in the cabinet alongside the Church's front door and may also be read on the regularly updated website [www.stmarksparish.org.uk](http://www.stmarksparish.org.uk) together with other Parish news. Fr Bineesh Elenjikkal is the Ipswich Hospital Catholic Chaplain assisted by Deacon Rev Clive Brooks (01026 396319)

All are very welcome to attend Holy Family services; it is not necessary to be a Catholic and enquiries about the Catholic Faith are always welcome. Please contact The Priory, as above, or a local person whom you know is a Catholic.

### Services planned for DECEMBER 2021

**Sunday 5 2nd SUNDAY OF ADVENT**  
9am Mass

**Tuesday 7**  
9.20am Eucharistic Adoration  
10am Mass

**Sunday 12 3rd SUNDAY OF ADVENT**  
9am Mass

**Tuesday 14**  
9.20am Eucharistic Adoration  
10am Mass

**Sunday 19 4th SUNDAY OF ADVENT**  
9am Mass

**Tuesday 21**  
9.20am Eucharistic Adoration  
10am Mass

For Mass times on 24th & 25th December please read the Parish weekly newsletter or visit the Parish website above

**Thursday 24 THE NATIVITY OF THE LORD**  
**Friday 25 CHRISTMAS DAY**

**Sunday 26 THE HOLY FAMILY OF JESUS, MARY & JOSEPH**  
9am Mass

**Tuesday 28**  
9.20am Eucharistic Adoration 10am Mass

Please refer to the weekly Newsletter, with Mass times, that is always displayed in the cabinet alongside the Church's front door and may also be read on the regularly updated website [www.stmarksparish.org.uk](http://www.stmarksparish.org.uk) together with other Parish news.

## East Bergholt WI

2020 was a difficult time for all of us. However, as a group we were pleased to be able to keep in touch in many ways and enjoyed sharing news and activities with each other through e-mail and meeting up in small groups when restrictions allowed.

As the latest restrictions start to ease, we are making more positive plans for the months to come. We have used Zoom successfully for our last three main meetings. Our Craft group have been getting together virtually once a fortnight and we have also had lunch time and evening get togethers for members who wish to join in.

From 2021 the WI subscription year will run from April to March. Due to savings made in 2020, through the cancellation of our monthly meetings, we are pleased to be able to offer our members a reduction and our annual subscription for 2021 will be £34.

We would be pleased to welcome new members to share in our activities and friendships. If you would like to join us please contact our President Tina Hurley on 01206 298223, Gill Rattray on 01206 298380 or through our website. We look forward to meeting you.



## Local Services



### The Constable Country Medical Practice

The Medical Centre,  
Heath Road, East Bergholt, Colchester  
CO7 6RT

#### Surgery opening hours

8.00am – 6.30pm Monday to Friday  
Telephone 01206 298272  
Fax 01206 299010

36 The Street, Capel St Mary, Ipswich  
IP9 2EE

#### Surgery opening hours

8.00am – 6.30pm Monday to Friday

Dispensary 8.30am – 6.15pm  
(closed between 1-2pm)  
Telephone 01473 310203  
Fax 01473 311722

### Crime prevention

<http://www.suffolk.police.uk/safetyadvice/reportacrime/tellthepolice.aspx>

PC 1347 Gilkes Pcco 3041 Cooper  
[babergheast@suffolk.pnn.police.uk](mailto:babergheast@suffolk.pnn.police.uk)  
Telephone...101



### MOBILE LIBRARY

#### Stratford St Mary - Route 11

The bus stops every 4 weeks on Wednesdays, subject to current restrictions

24 November, 22 December, 19 January

Black Horse - 11.05am - 11.20am  
Tally Ho! Corner - 11.25am - 11.45am  
Strickmere (School Lane end) - 11.50am - 12.10pm

#### Route 14

The bus stops every 4 weeks on Tuesdays

2 November, 30 December, 25 January

#### Holton St Mary

Church Square - 9.30-9.45am

#### Raydon

St Mary's Raydon - 9.50-10.30am

#### Lower Raydon

Sulleys Hill - 11.30 - 11.45am

#### Higham

The Green - 11.55am to 12.10pm

The **customer service line 01473 283838** is staffed 9am to 5pm from Monday to Friday and can handle any library customer queries renewals and reservations to any general library queries. An answer phone is available outside of operating hours and people can also email [help@suffolklibraries.co.uk](mailto:help@suffolklibraries.co.uk)





# Bin collections

Week Commencing			
	22 <sup>nd</sup> November	Refuse Week	
	29 <sup>th</sup> November	Recycling Week	
	6 <sup>th</sup> December	Refuse Week	
	13 <sup>th</sup> December	Recycling Week	
	20 <sup>th</sup> December	Refuse Week	
Waste Services 0300 1234 000 (option 4) Email: <a href="mailto:recycling@baberghmidsuffolk.gov.uk">recycling@baberghmidsuffolk.gov.uk</a> Visit <a href="http://www.recyclenow.com">www.recyclenow.com</a> to find your nearest recycling banks			



Do you want a recommendation?

Tell us your favourite local service - could be a pub or restaurant or takeaway, or other service you think would benefit getting a recommendation....If we agree, we'll print it here

**The Layham Queen** take out service on Fridays & Sunday Roasts - Steve and Tannith are very community minded and give a very good service

**Simply Thai** Manningtree - It was simply delicious! Freshly cooked, and arrived within the quoted time frame. 01206 396060. Delivers to Holton St Mary

**Zaynab** and **Mother Indian** at Capel. Really good and highly recommend. They don't deliver, but it's made quickly for pick-up.

**Brantham Bull** 01473 328248

**Lucca Enoteca** Manningtree 01206 390044

**Oranges & Lemons** East Bergholt 01206 299000

**the florist in East Bergholt** does lovely flowers:- [www.gayedrummond.com](http://www.gayedrummond.com)

**Sam Pritchard** [sam@samselectrics.co.uk](mailto:sam@samselectrics.co.uk) 07940031776 - Sam can certify safety for insurance and landlord work too. Anyway, he's great.

There's room for more...let us know...!

# Local Directory

THE GATTINETTS

## OFFICE and WORKSHOP

### PREMISES TO RENT

- ☐ Central East Bergholt with excellent road and rail links
- ☐ Various sizes with tailored leasing arrangements
- ☐ Carpeted offices with own toilets and kitchenette
- ☐ Quiet rural location with plenty of parking



[www.gattinets.co.uk](http://www.gattinets.co.uk)

Or ring 01206 393089 / 07941 781489 to check availability

## ARTSCENE

Local Mobile Picture Framing Service  
30+ years experience

Oil paintings, Photos, Prints, Medals, 3D Bar frames,  
X-Scratch, Tapestry, Mount Cutting, Stretching Also  
Frames cut to size for the DIY enthusiast

FOR MORE DETAILS TELEPHONE  
LESLEY ON 01473 310630 (Bentley)  
MOBILE 07500 488667  
Email: [lesley.artscene@gmail.com](mailto:lesley.artscene@gmail.com)

## Fix-A-Lock

Locksmith - available 24/7

• 24 HOUR LOCKSMITH -  
Wooden and UPVC doors

Ted Blanchette  
07836 551032

R.m.k.chisnall

## YOUR LOCAL MACHINE SERVICE

For mower repairs, compact tractors  
and small machinery

**Mobile: 07557 771721**  
**Email: [r.m.k.chisnall@gmail.com](mailto:r.m.k.chisnall@gmail.com)**

John Deere trained  
Address Wilsnair, Radleigh Road Higham, Colchester CO76LJ



Bespoke, handmade soft furnishings  
& upholstery



Contact Annabel

07539 722496 sewnimble

### KATE O'CONNOR - BHSAI

Horse riding free lance instructor.  
DBS checked up to date, Child safeguarding up  
to date, 20 years teaching experience  
Showjumping/ x country/ dressage  
Confidence building /natural horsemanship.  
Behavioural problems / loading etc .  
Can come to you or meet at a hired venue.  
Ip7 and Co7 area.

**Mob . 07891135561**

Email [katevandervord@live.co.uk](mailto:katevandervord@live.co.uk)

**If your picture needs framing:  
We can do it!**

ALB-Framing

**07769 858076**

**Whilst following Covid guidelines  
home and office visits are available**

- Bespoke framing
- Gallery wrap
- Float mount
- Block mount
- Sport shirt framing
- Medal framing
- Antique framing
- Gift vouchers

As members of Fine Art Trade Guild, who  
wrote the international standards for picture  
framing, we work to these requirements.



[www.alb-framing.com](http://www.alb-framing.com)  
[info.albframing@gmail.com](mailto:info.albframing@gmail.com)

Plethora  
of Words.

*Professional,  
expert copy and  
content writing*

Website Content  
Blogs  
Social Media Content  
Articles  
Press Releases  
CV & Job Spec Writing  
Excel SpreadSheet  
Assistance  
...and more

01255 214612 | 07521 735940

[info@plethoraofwords.co.uk](mailto:info@plethoraofwords.co.uk)

[www.plethoraofwords.co.uk](http://www.plethoraofwords.co.uk)



VILLAGE LOCATION WITH A WONDERFUL  
GARDEN AND OUTSIDE CLASSROOM.



01206 322466

[admin@abcpreschoolstratford.co.uk](mailto:admin@abcpreschoolstratford.co.uk)

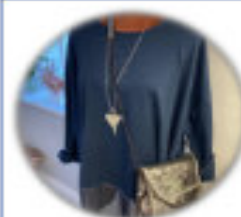
[www.abcpreschoolstratford.co.uk](http://www.abcpreschoolstratford.co.uk)

CHARITY NO. 1134021

30 funded hours for 3 & 4 year olds  
15 funded hours for eligible 2 year olds  
8.45am to 3.00pm (term time only)

**JOIN US FROM 2 YEARS OLD**

**OFSTED  
OUTSTANDING**



### Ladies Boutique in East Bergholt

Selling clothes, scarves, bags, jewellery and purses

**Wed, Thurs and Fri – 10am - 3pm**

**Sat – 10am - 1pm**

Contact Sarah McGrath

The Street, East Bergholt CO7 6TF

[info@sarahjane-colchester.co.uk](mailto:info@sarahjane-colchester.co.uk)

Tel 01206 299160

Sarah Jane's Boutique

[www.sarahjane-colchester.co.uk](http://www.sarahjane-colchester.co.uk)





# Hall Farm

## Shop & Cafe Restaurant

**HALL FARM**  
SHOP | DELICATESSEN | CAFE

Located on the outskirts of Stratford St Mary within the beautiful Dedham Vale, Hall Farm Shop & Cafe Restaurant offers stunning views, wonderful food and great shopping.

The Cafe Restaurant serves the most amazing food, from fabulous breakfasts and delicious lunches to exquisite cheese scones and mouth-watering cakes. Booking is advised.

Our Farm Shop, Butchery and Deli stock a wide selection of local and regional quality produce, as well as offering a tempting array of homeware, gifts and plants.

**Restaurant Open: Mon to Fri 9am to 5pm / Sat and Sun 10am to 4pm**  
**Farm Shop Open: Mon to Sat 9am to 5pm / Sun 10am till 4pm**



Shop: 01206 322572, [shop@hallfarmshop.co.uk](mailto:shop@hallfarmshop.co.uk) | Restaurant: 01206 323600, [cafe@hallfarmshop.co.uk](mailto:cafe@hallfarmshop.co.uk)  
Hall Farm, Stratford St Mary, Colchester, Essex CO7 6LS | [www.hallfarmshop.com](http://www.hallfarmshop.com)

## Rheal Coating Co

We are now pleased to offer our tyre fitting service.

- New tyres
- Wheel balancing
- Puncture repair
- Valve replacement
- Silver and black wheel weights
- Tyre disposal

**Services we offer:**

- Powder coating
- Brake caliper refurbishment specialists
- Sand blasting
- Chemical stripping
- Braking system/pipes replacements

There's painting it, and there's giving it a Rheal coat

FOR MORE INFORMATION & PRICES PLEASE SEND US A MESSAGE

" We are situated in Raydon on the B1070 "

Contact info:  
07539377740 – [info@rhealcoating.co.uk](mailto:info@rhealcoating.co.uk)



## Leisure Hire

### Marquee and Equipment Hire

- Marquees erected on most surfaces
- Awnings • Walkways
- Extensions to Buildings • Linings
- Lighting • Furniture
- Flooring & Staging
- Heating

Summer or Winter      Weddings  
Anniversaries      Corporate

Brochure upon request  
[www.leisurehiremarquees.co.uk](http://www.leisurehiremarquees.co.uk)

**(01206) 242196**

### Holiday Let in Cromer Coach House Studio - Sleeps 2

- Spacious two-level studio
- Double bed. Ensuite shower
- Large sitting room with wood burner
- Fully fitted kitchen with dining area
  - Pretty courtyard garden
- 5 minute walk from the beach
- Dogs allowed (maximum of 2)

Please visit our website: [www.coachhouse.studio](http://www.coachhouse.studio)

### Blackwell Barn Holiday Let The Street Raydon IP7 5LW

- Large double/twin bedroom
- Ensuite shower
- Fully fitted kitchen
- Countryside setting
- Cozy, modern and Covid cleaned

All enquiries via [www.cottages.com](http://www.cottages.com)





**PLANT CENTRE  
GARDEN & CAFE**  
*For Specialist and Popular Plants*

*Renowned plant nursery right on your door step, established by Rupert and Sara in the walled garden at East Bergholt Place.*

Garden & Arboretum open Mar -Sept  
Café and gift Shop **OPEN DAILY**  
10am-5pm  
East Bergholt Place, CO7 6UP  
Tel: (01206) 299 224

**BUILD WITH  
COLLIERS**

## GETTING YOUR GARDEN READY FOR SUNSHINE?

Visit our yards in IPSWICH and COLCHESTER for a wide range of fencing, trellis, decking, paving, artificial grass, sleepers, decorative aggregates and much, much more.

With service you can expect from an independent builders' merchant which has been around for almost 200 years.

**COLCHESTER 01206 715500 | IPSWICH 01473 689605**

**Collier &  
Catchpole**  
COLLIERCATCHPOLE.CO.UK

Looking for aggregates,  
paving, walling and edging?

Go to our website and  
click on our online shop.  
**WE DELIVER!**



**Design, Implementation and maintenance of  
Garden Landscapes**

**Improve your garden this year!**  
**Wendy Norman 07756 364560**

Email [wendy@finestgardens.co.uk](mailto:wendy@finestgardens.co.uk)

**RHS qualified**

**Member of The Gardeners Guild**

## AB Trees

- Tree reduction
- Tree felling
- Tree pruning
- Hedge trimming
- Vegetation clearing
- Lawn Cutting
- Log splitting
- Firewood
- Can cover all aspects of arboricultural tree work

**07808 808147**

[antonbray1990@gmail.com](mailto:antonbray1990@gmail.com)  
Ipswich



## Bland Landscapes Ltd

**Our services include:**

Tree work Specialists	All types Fencing inc
Felling	Equestrian Fencing
Pruning	Driveways
Reducing	Patios
Reshaping	Turfing
Stump Grinding	Planting
Seasoned Logs	Grass Cutting

**01206 230882**

[www.blandlandscapes.co.uk](http://www.blandlandscapes.co.uk)

Ivydene, Frating Road  
Colchester, Essex, CO7 7SY



# DEDHAM VALE TREE SURGERY

NPTC qualified, fully insured  
24 hr emergency tree work  
Hedge maintenance and reduction  
Logs kindling and wood chip supplied  
Stump grinding



All tree work undertaken  
Crown reduction and shaping  
Crown lifting and thinning  
Pruning and pollarding  
Felling, sectional dismantling

Specialising in big trees in delicate situations

Info@dedhamvaltetreesurgery.co.uk    mobile 07756 811098  
www.dedhamvaltetreesurgery.co.uk




## HANDMADE UPCYCLED ITEMS FOR THE HOME AND GARDEN

We take things that would otherwise end up being thrown away and craft them into unique and beautiful items.

- Flower Vases
- Furniture
- Portable Bars
- Rustic Tea Trays
- Wall Art

Want something bespoke? Commissions welcomed.

Tel: 07947 211 802  
craftedbygreenwood@gmail.com

   
@CraftedByGreenwood



Garden services.  
Competitive rates

Call Bryan  
07822 078243

### Swift Garden Services S G S

DESIGN  
PLANTING  
CLEARANCE  
MAINTENANCE

HEDGE CUTTING AND LAWN MOWING  
ALL YOUR GARDEN REQUIREMENTS CATERED FOR  
For more information please contact:  
R SWIFT (HND Commercial Horticulture)  
Telephone 07947 322429

## Mending your home

### ACER TREE SPECIALISTS LTD

*All staff NPTC qualified and fully insured. 10 million public liability*

- 24 hours emergency tree work
- All aspects of tree work under taken .
- Hedge maintenance and reductions.
- Stump grinding
- Tree removal
- Pruning
- Pollarding



25 years experience. For a free no obligation estimate

**Call 07786836928 or 07891135561  
Or Email Acertreespecialists@hotmail.co.uk**

## BAILAND CONSTRUCTION LTD

EXQUISITE ATTENTION TO DETAIL

TOAD HALL  
THE HEATH  
DEDHAM  
ESSEX  
CO7 6BT  
01206 323230

WWW.BAILANDCONSTRUCTIONLIMITED.CO.UK  
ENQUIRES@BAILANDLTD.CO.UK



### Philip Avery

**Domestic Electrician**  
**Local, reliable, competitively priced**

Registered Part P electrician  
Plumbing  
Carpentry / joinery  
Home improvements/maintenance

2 The Gardens,  
Raydon  
Tel: 01473 311261  
Mob: 07923 434689  
avery218@btinternet.com





**Andy Slocombe brickwork  
serving the Dedham vale**

for all your building requirements  
property maintenance, roofing, block paving, landscape,  
repairs & restoration

tel 01206 322884 / 07786 871364  
3 Constable Row Manningtree Road  
Dedham or Colchester Essex CO7 6DW

**S.W. STIFF**

Carpentry & Building Maintenance

For all your carpentry & building  
maintenance, call for a no obligation free  
quote. No job too small.

**CONTACT : Steven  
on 07811 005241**

**Michael J Byles**

Plumbing & Heating

Specialist in Oil Boiler installations,  
Maintenance & Servicing  
- Oftec registered.

General Plumbing & Heating  
work also undertaken.

Tel: 01206 822225  
Mobile: 07717 012433  
Email: Michaeljbyles@aol.com



*Call us for a free  
quotation*

95 School Lane, Stratford St. Mary,  
Suffolk, CO7 6LZ  
Tel: 01206 322969  
Mob: 07534424493  
E-Mail: info@orwellelectrical.co.uk  
www.orwellelectrical.co.uk

- Electrical Installations
- Electrical Testing
- Lighting Design
- Fire Detection Services
- 24-Hour Call out
- Response Maintenance



**Andy Smith Roofing**

TILING  
SLATING  
FASCIAS AND GUTTERING  
LEADWORK  
POINTING  
GENERAL PROPERTY MAINTENANCE  
30 YEARS EXPERIENCE



For more information contact  
Harvest Cottage, Upper Street  
Stratford St Mary CO7 6JW  
**01206 322882**  
**07754368693**



**tenon decorating**

"We are Specialists in  
Grade II Listed Buildings"

For all your internal and external painting and decorating work:

- Doors, Windows, Skirting and Fascias
- Artexing and Coving
- General Repair and Maintenance
- Floor and Wall Tiling
- Wallpapering
- NVQ2 Qualified

**A PROFESSIONAL PAINTING & DECORATING SERVICE  
FROM PEOPLE YOU CAN TRUST**

For a FREE Estimate Contact Steve Ferguson on 07719 357322 or 01206 393351  
www.tenondecoratingtd.co.uk - tenondecorating@btconnect.com  
Sbras, East End, East Bergholt, Colchester, Essex CO7 6XQ



**Ashley Short**

Carpentry, Joinery, Property Maintenance  
& General Handyman



Kitchen fitting -  
Bespoke units made  
Decorating,  
Renovations  
No Job too small  
Local and Reliable

**01473 311226 07904 875556**



# Jackson

## Plumbing and Heating East Anglia Ltd

- ❑ **Installation** - We install all makes and models of boilers, Combi and condensing specialists
- ❑ **Servicing** - All models serviced from £50.00
- ❑ **Repair and Maintenance** - All work Guaranteed, highly skilled engineers
- ❑ **Plumbing** - Bathrooms, cylinders, leaks etc
- ❑ **OAP 15% Discount**

Special discounts for residents of Higham, Holton St Mary, Raydon and Stratford St Mary

**£10.00 discount** - Servicing boilers and minor repairs  
**£30.00 discount** - larger repairs  
**£150 discount** - boiler changes  
**£250 discount** - full installation

**07834 612009**  
**01206 322063**  
**01473 214215**

(estimates given before work undertaken)

## Brett Valley Installations

### Oil boiler Service Engineer.

Very experienced in fault diagnosis and repair, servicing and installation of oil fired boilers and heating systems.

Local, Reliable, Competent.

**Nick Marno Tel. 01206 337316 or 07896 054439**



ROSEA

PLASTERING SERVICES

**07989 659967**

roseaplastering@gmail.com

roseaplastering



**David Friend** Oil Heating Services  
 Oil Fired Boiler Service, Repair and Installation Specialist



- **Servicing and commissioning of oil fired boilers.**
- **Boiler and system breakdowns.**
- **AGA's, Rayburns and Stanleys.**
- **Oil tank replacement and installation.**
- **Oil boiler replacement.**
- **All central heating system components catered for.**

**No call out charge. Free quotes.**

**Tel 01394 411839 Mobile 07786 971425**



**H.C. SMITH  
BUILDERS**

SKILLED WORKERS

ESSEX SUFFOLK

BRICKWORK EXTENSIONS REPAIRS  
 LANDSCAPING PATIOS REPOINTING

RELIABLE. FRIENDLY. METICULOUS.

✉ ENQUIRIES@HCSMITHBUILDERS.CO.UK

☎ 07468 456772

WWW.HCSMITHBUILDERS.CO.UK

**GRANSON**  
 Plumbing & Heating Services

Gas Safe Registered Engineers  
 Local, Friendly & Reliable Service

- **Boiler & Central Heating Installations, Servicing & Repairs**
- **Power Flushing**
- **Under Floor Heating**
- **Bathrooms, Wet Rooms Taps & Showers**
- **Gutters, Downpipes & Drain Rodding**

**TELEPHONE:  
07912 161 646**

EMAIL:  
gransonplumbingandheating@hotmail.com





**ARDLEIGH  
CHIMNEY SWEEP SERVICES**

- Traditional and Power Sweeping
- CCTV Inspections
- Safety Certificate Issued
- Fully Insured

**ANDREW SMITH**

**01206 231718 • 07845 249820**

31 HARWICH ROAD, LAWFORD, MANNINGTREE, ESSEX CO11 2LS

**Essex & suffolk  
PEST SOLUTIONS**

Your local pest control experts  
for home & business

- Free advice, fast response
- Highly accredited, fully qualified & insured
- Discreet - unmarked vehicles

**Info@eandspestsolutions.co.uk**  
**Tel: 01473 328092 (Holbrook)**

**Nigel Bruce**

Industrial & Domestic  
**ELECTRICIAN**

'The Swift', Upper Street, Stratford St. Mary,  
Colchester CO7 6JW  
Telephone: 01206 322751

**GORDON SHORT**

PAINTER / INTERIOR & EXTERIOR,  
PROPERTY MAINTENANCE  
& GENERAL HANDYMAN

- Trustworthy and efficient
- Property Maintenance & General Handyman
- No job too small or too big
- Local and reliable

**GIVE ME A CALL:**  
**01473 313053 / 07773 236642**  
**gordonshort1959@icloud.com**

**Richardson  
.....&.....  
Rothwell**

Plumbing & Heating Ltd

FRIENDLY, LOCAL PLUMBING AND HEATING ENGINEERS

SPECIALISING IN OIL AND GAS BOILER INSTALLATION,  
REPAIRS AND SERVICING

COMPETITIVE PRICES

ALL PLUMBING WORK UNDERTAKEN. NO JOB TOO  
SMALL

Unit 1  
Dedham Vale Business Centre  
Manningtree Road  
Dedham  
Colchester  
Essex CO7 6BL

Tel: 01206 323732 Fax: 01206 323735  
E-mail: enquiries@richardsonandrothwell.co.uk

Gas Safe registration number: 184271



# In the House

**Hicks TV & Audio Solutions**  
(Formerly BV Hicks Ltd)

**Are you having trouble setting up or operating your TV / Audio or DVD?**  
**Has your equipment stopped working?**  
**Does your TV need a re-tune?**

**Help is at hand - Call Toby Hicks**  
**01449 771991 / 07968 686035**

**AERIAL & SATELLITE SPECIALISTS**

- DIGITAL TV AERIALS
- SKY & FREESAT
- ADDITIONAL TV POINTS
- TV WALL MOUNTING
- WIFI EXTENDERS
- AUDIO SYSTEMS INCLUDING SONOS
- BUGULAR ALARMS
- CCTV SYSTEMS
- REPAIRS & MAINTENANCE

**MJS SYSTEMS**  
*For A Free Quote and Advice Call*

CAI - RDI & TRUSTMARK APPROVED

digital TV Approved Member   cai plus   TRUST MARK   [www.mjsystems.co.uk](http://www.mjsystems.co.uk)  
Buckingham, Bedfordshire MK18 2BB

**EDg**  
edwards design group

Over 25 years of professional making & fitting of curtains and blinds using the very best available products.

Fabrics, wallpaper, paints, floor coverings, cabinet furniture, lighting & upholstery.

Visit our showroom in East Bergholt or our website: [www.edwardsdesigngroup.co.uk](http://www.edwardsdesigngroup.co.uk)  
Email: [info@edwardsdesigngroup.co.uk](mailto:info@edwardsdesigngroup.co.uk)

The Gattinotts, Unit 2a, Hedleigh Road  
East Bergholt, Colchester CO7 6QT  
01206 299780



**SCHOFIELD REMOVALS** Est. 1919

**Removals and Storage**

- We cover local, national and international moves.
- We've been moving people from Suffolk and Essex for nearly 100 years.
- Find out about our specialist moving services; from pianos and paintings, to full packing services. We're always happy to help!
- We have over 100 clean and safe self-store units.
- Our staff are long serving and fully trained to BAR standards.

**— Your move, safe in our hands —**

01206 233376 | [www.schofieldremovals.co.uk](http://www.schofieldremovals.co.uk) | [info@schofieldremovals.co.uk](mailto:info@schofieldremovals.co.uk)





# ARRDEN VALE

kitchens

100% EXCLUSIVE, BESPOKE, HANDMADE TIMBER

Established in 1997, Arrden Vale Kitchens is a family business dedicated to producing bespoke handmade kitchen, bedroom and office furniture.

We specialise in the design, creation and installation of exclusive handmade kitchens throughout East Anglia.

**T: 01449 782062**  
**E: [info@arrdenvalekitchens.co.uk](mailto:info@arrdenvalekitchens.co.uk)**  
**[www.arrdenvalekitchens.co.uk](http://www.arrdenvalekitchens.co.uk)**



AGA • BETHAZONE • FRANK & PIERRE • Fisher & Paykel • SIEMENS • Quooker • THERMOMAX • Miele • Subzero/Wolf • LINNBERG



## Ann Mason CARE

**Full and part-time care workers required**  
 to provide care visits to people in their own home

- Flexible Hours
- Pay to match qualifications and experience
- Training provided if required

For further information call: 01206 233372  
 Or visit: [www.annmasoncare.co.uk](http://www.annmasoncare.co.uk)

## DianaM Cleaning

- Home weekly cleaning
- Home deep cleaning
- Office cleaning

Contact information: Diana Marinova

**Mobile number:**  
**07925 624123**

**Email address:**  
[dianamarinova61@yahoo.co.uk](mailto:dianamarinova61@yahoo.co.uk)



# Right at Home

Quality Care in Your Home



**WE'RE HIRING**

**Would you like a Care Service that offers you:**

- A Discreet Service
- Consistent CareGivers
- Set Visit Times
- A Person Centred Approach

**We can provide:**

- Personal Care Visits
- 24hr Live-In Care
- Companionship
- Sleeping/Waking Nights
- Light Housekeeping



*Contact us today at*

📞 01206 932792  
 📧 [colchester@rightathomeuk.com](mailto:colchester@rightathomeuk.com)  
 🌐 [www.rightathomeuk.co.uk/colchester](http://www.rightathomeuk.co.uk/colchester)  
 ⓘ [www.facebook.com/rightathomecolchesteranddistrict/](https://www.facebook.com/rightathomecolchesteranddistrict/)

 Care Quality Commission  
 Good

 TOP 20 AWARD 2019  
 homecare.co.uk





**We understand**  
Mary loves to keep up  
with all the gossip

Our staff work tirelessly to make sure our residents are kept stimulated, from trying a new hobby to making sure Mary's up to date with the latest news.

Blackbrook House care home  
Gun Hill, Dedham, Colchester, Essex, CO7 6HP  
Call us for more details on **01206 805839**  
Visit: [anchorhanover.org.uk/BlackbrookHouse](https://anchorhanover.org.uk/BlackbrookHouse)

**9.5**  
Anchor Group  
carehome.co.uk  
score\*\*

Rated Jan 2020  
Good  
Care Quality  
Commission

**BICS**  
THE BRITISH INSTITUTE OF CLEANING SCIENCE

**Proudly  
not-for-profit**

\*carehome.co.uk review scores are based on independent reviews with a maximum score of 10.  
Review quoted and rating correct as of 12/05/2021.

# Professional Services



**Pedicare  
Foot Clinic**  
London House, High Street,  
Dedham CO7 6HA  
Tel: 01206 322674

Web: [www.pedicarefootclinic.co.uk](http://www.pedicarefootclinic.co.uk)  
Email: [nicola.pedicare@gmail.com](mailto:nicola.pedicare@gmail.com)  
Mob: 07732 039726  
Nicola Rampton Dip.FH. MAFHP

Foot health  
check and  
treatments for a  
range of foot  
problems and  
conditions



**ABILITY  
physiotherapy**

**Musculoskeletal  
& Sports Injury  
clinic**

- Back Pain
- Neck Pain/Whiplash/Headaches
- Tennis and Golfer's elbow
- Achilles and Patella tendinitis
- Ankle sprain injury
- Orthopaedic rehabilitation following surgery

[www.abilityphysiotherapytd.co.uk](http://www.abilityphysiotherapytd.co.uk)  
10 Rarick Road, Loxford, CO8 2LJ  
[sara@abilityphysiotherapytd.co.uk](mailto:sara@abilityphysiotherapytd.co.uk) 07900 908 667

**Susan Morrison**  
Registered Osteopath

TEL: 01206 299027  
MOB: 07919 101099  
email: [susie.kramers@gmail.com](mailto:susie.kramers@gmail.com)

Abbey View, Rectory Hill  
East Bergholt, Suffolk,  
CO7 6TG



# Nayland Chiropractic

Supporting Your Wellness

**Inga Hurren** Registered Chiropractor

4 Church Mews, High Street, Nayland CO6 4JF  
t: 01206 264139  
e: enquiries@naylandchiropractic.co.uk  
w: www.naylandchiropractic.co.uk



## Body Mind as One

*Movement & Mindfulness for Adults*

Now that we are emerging from restrictions, I'm excited & delighted to announce that *Body Mind as One* is holding face to face classes in my small private studio in Chattisham.

So, if being kind to yourself includes movement & mindfulness, please visit the website for more information on class content, schedules, booking & payment details, and other relevant 'stuff'.

You will be so welcome to join us.

With love & gratitude  
Janet

Classes are held on  
Mornings - Mon, Tues, Thurs & Fri  
Evenings - Mon, Tues & Thurs

and include  
Yogalates™  
Somatic Exercise  
ChiBall™  
Yin Yoga  
Restorative Yoga  
Yoga Nidra Meditation  
Guided Relaxation  
Mindfulness

For more information and full details, please visit

**www.bodymindasone.com**

## ACUPUNCTURE + WELLNESS

• stressrelief • anxiety/depression • pain problems • fertility



**Ben Hymas** Lic.Ac, BSc(Hons) MBAC  
British Acupuncture Council Member



Tel: 07717 314961

benhymas@gmail.com • www.acupuncture-wellness.co.uk  
Kersey Mill, IP7 6DP • Open: by appointment



Osteopathy and Sports  
Therapy/Massage Clinic  
in the heart of Dedham  
providing treatment for:



- Back pain & sciatica
- Arthritis pain & stiffness
- Neck & shoulder pain
- Trapped nerves
- Tennis/Golfer's elbow
- Tendinopathy
- All joint strains
- Muscle/ligament strains



*Dedicated to getting you better.*



**Luke Jackman Bsc Hons Ost**  
Registered Osteopath

Tel: 01206 323 239 / 07974 144593

www.dedhamosteopathy.co.uk

One hour initial appointment • Free on-site parking • Open weekdays, evening & weekends



**Chiropody/Podiatry service**  
**Direct to your home**

Covering Stratford, Higham, Holton,  
 Raydon & all local areas.

For enquiries please contact

**Mr C Dunn,**  
**BSc Hon's Podiatry.**  
 MChS, HPCP  
 Registered  
 Chiropodist/Podiatrist.

**01473 211217**  
**07803601085**

**FRANKLYN  
 NEVARD  
 ASSOCIATES**  
 CHARTERED ARCHITECT

*Rowland, Sullys Hill, Lower Raydon, Ipswich, Suffolk IP7 5QZ*



**Are you working from home now?**  
 Would you like an extension to give you a little more space,  
 or possibly reconfigure your existing home?

We are here to assist you, contact Franklyn  
 Tel: 01473 572 382 Mobile: 07515 351 894  
 Email: franklyn@franklynnevard.co.uk  
 Web: www.franklynnevard.co.uk

ESTABLISHED IN 1981



**"I'll sort  
 it out  
 tomorrow"**

**We can make it easy to prepare  
 an LPA today!**

When they are needed, the absence of  
 Lasting Powers of Attorney results in  
 additional time, stress and cost for those  
 trying to help look after your affairs. Putting  
 LPAs in place before they are necessary  
 provides you with protection in regard to  
 your financial affairs and welfare choices,  
 which many people wrongly believe their  
 loved ones can deal with for them if they  
 ever become unable.

**Contact us today to protect  
 yourself and your loved ones.**  
**Legal advice with a conscience.**

**FJG** FISHER  
 JONES  
 GREENWOOD  
 SOLICITORS

Fisher Jones Greenwood LLP, Charter Court,  
 Newcomen Way, Colchester Business Park,  
 Colchester, Essex, CO4 9YA  
 Offices across Essex and London

**01206 700585**  
 www.fjg.co.uk  
 enquiry@fjg.co.uk



**THE  
 DEDHAM VALE  
 DELI**

[WWW.DEDHAMVALEDELI.CO.UK](http://WWW.DEDHAMVALEDELI.CO.UK)

Your local online deli service bringing curated  
 artisanal products direct to your door.

- Hand Crafted Cheese
- Olives & Antipasti
- Oils & Vinegars
- Meze & Tapas
- Nibbles with Drinks
- Charcuterie & Fish
- Bakery, Crackers & Accompaniments
- Healthy Snacks
- Ethically sourced Teas & Coffees
- Preserves, Jams & Honey
- Gift Hampers & Holiday Cottage  
 Welcome Boxes



Order Your Deli Delights, Delivered To Your Door:  
**[WWW.DEDHAMVALEDELI.CO.UK](http://WWW.DEDHAMVALEDELI.CO.UK)**



**Penrose & Partners  
VETERINARY SURGEONS**

Upper Street  
STRATFORD ST MARY  
Tel: 01206 323414

"Friendly, Professional, Local"

Mon-Fri 8.45-12.30 & 2.30-6.30 (4.00 Wed)  
Sat morning at Brinkley Lane

Consultations by appointment  
Operating Theatre

Main Branch 70 Brinkley Lane, Highwoods,  
Colchester 01206 842808  
[www.penrosevets.co.uk](http://www.penrosevets.co.uk)

**Pest Solution**

The answer to all your Pest Problems



Free advice and quotations

Rats, Mice, Wasps, Squirrels,  
Moles, Cluster Flies, Bed Bugs,  
Fleas, Moths, to name a few!

The Street, Raydon, IP7 5LW  
**01473 396807**

[info@pestsolution.co.uk](mailto:info@pestsolution.co.uk)  
[www.pestsolution.co.uk](http://www.pestsolution.co.uk)

**DIY LIVERY**

*available at Lower Raydon*

Barn style stables  
Large paddocks  
Manège  
Cross country jumps



Call Graham on **07710 540926**  
or email [graham@ivc-ltd.co.uk](mailto:graham@ivc-ltd.co.uk)

**THE BARN  
VETERINARY PRACTICE**

Robert M Hill BVMS MRCVS

Wentham Road, Copdock, Ipswich  
Tel: 01473 730213  
2A Ashcroft Road (off Norwich Road), Ipswich  
Tel: 01473 743460

Consultations by appointment  
24 Hour Emergency Service

Monday-Friday: 8.30am-7pm,  
Saturday: 9am-12noon.

Sunday: 10am-1pm (Ashcroft Rd only)

**MODERN DIAGNOSTIC, MEDICAL  
AND SURGICAL FACILITIES ON SITE  
CAR PARKING**

Surgical Operating Theatre • Ultrasound scanner  
Radiography Department • Electrocardiography  
Own laboratory for rapid testing • Endoscopy  
Hospitalisation with isolation ward • Stabling



*Kingsleigh Estate Agents*

**Sales and Lettings**

Award-winning family-run,  
independent agent

**Covering Dedham, Colchester, Manningtree  
and surrounding villages**

- Fully immersive 360° tours
- Professional drone photos
- Bespoke Particulars
- Premium Rightmove listings
- 3D Floorplans
- Experienced, award-winning team
- Paid social media adverts
- Associate office in Park Lane, London

**No lengthy contracts — zero week tie-in period**

**01206 940123**

High Street, Dedham, CO7 6DE

[sales@kingsleighresidential.co.uk](mailto:sales@kingsleighresidential.co.uk)

[lettings@kingsleighresidential.co.uk](mailto:lettings@kingsleighresidential.co.uk)

Follow us on social media for  
sneak previews of soon-to-be  
launched properties





• Estate Agents • Lettings • Valuations  
• Land & Property Management



**Chapman Stickels**

*Suffolk and North Essex*

Providing unrivalled local knowledge, combining  
traditional service with a modern marketing approach.

Please visit us at  
**The Corn Exchange, Hadleigh.**

Or call us  
**01473 372 372**

**Chapman Stickels**  
The Corn Exchange, Market Place, Hadleigh, Suffolk IP7 5DN  
P: 01473 372 372 E: [info@chapmanstickels.co.uk](mailto:info@chapmanstickels.co.uk) W: [chapmanstickels.co.uk](http://chapmanstickels.co.uk)

*Part of Investeq Holdings Limited*



## **STORAGE CONTAINERS TO LET**

**NOTLEY ENTERPRISE PARK  
RAYDON  
CO7 6QD**

20ft. - £80 per month + VAT

40ft. - £140 per month + VAT

**Let on Easy In / Easy Out Terms  
Secure Site  
24 Hour Access**

Contact:

**Nicholas Percival Surveyors**

**T: 01206 563222**

**E: [info@nicholaspercival.co.uk](mailto:info@nicholaspercival.co.uk)**



**Grier & Partners**  
THE PROPERTY EXPERTS

Located in the centre of the village of East Bergholt with a wealth of local connections and a broad approach to marketing property. We combine a strong friendly family lead team with National marketing and concise social media activity to best effect sales or lettings for our clients. Contact us to see what we can do for you.

Find us on Facebook & Twitter  
[www.grierandpartners.co.uk](http://www.grierandpartners.co.uk)

**Grier & Partners**  
LAND & NEW HOMES

For development land enquires contact John Radford - [john@grierandpartners.co.uk](mailto:john@grierandpartners.co.uk)

Printed by K-D S, Chattisham. (01473) 652 354

## **BENEFICE CONTACTS, SERVICES AND EVENTS**

**Priest-in-charge:** Rev'd Manette Crossman: Tel. 07947 737789  
Email: [revmcrossman@gmail.com](mailto:revmcrossman@gmail.com)

**Curate:** Rev'd Nicola Tindall: Tel. 01787 212340  
Email: [nicolajtindall@btinternet.com](mailto:nicolajtindall@btinternet.com)

**Lay Elder:** Sandy Ranson 01206 322156  
Email: [sandyranson29@gmail.com](mailto:sandyranson29@gmail.com)

Please contact Rev'd Manette if you would like to know more about Baptism or Weddings, or if you need to arrange a loved one's funeral. We are hoping to arrange a Confirmation service for next spring / early summer. Please get in touch with Rev'd Manette if you would like to know more about this.

You can also get in touch with Rev'd Manette or Rev'd Nicola if you would like receive Home Communion.



Regular updates about what is going on in our parishes can be found on the Benefice Facebook page:  
<https://www.facebook.com/4-Marys-Benefice-111433503828636>

**Benefice website:** [www.4marys.org.uk](http://www.4marys.org.uk)

### **Churchwardens:**

<b>Higham</b>	Hugo Parker 01206 337234
<b>Holton</b>	Richard Noel 01206 298276 Paul Torrington 01473 312046
<b>Raydon</b>	Geoff Horrex 01473 310422 Simon Tennent 01473 310320
<b>Stratford</b>	Jonathan Dewey 01206 322148

### **Benefice Safeguarding Officer:**

Frances Torrington: 01473 312046 [familytorrington@btinternet.com](mailto:familytorrington@btinternet.com)



## Sunday Services for December

Please check our Facebook pages and the 4-Marys website for details and updates. If there are any significant changes, those who are on our regular email contacts list will be notified.

**Sunday 5th December** 10am: Holy Communion Stratford St. Mary  
2<sup>nd</sup> Sunday of Advent

**Sunday 12th December** 10.00am: Holy Communion Higham  
3<sup>rd</sup> Sunday of Advent

**Saturday 18th December** 5.00pm: Community Carol Singing in  
Raydon

**Sunday 19th December** 9.30am: Family Hour Nativity (Parish Rm)  
4<sup>th</sup> Sunday of Advent 10.00 am: Holton St. Mary Holy  
Communion (BCP)  
5 pm: Carol Service in Stratford St. Mary.  
6.30pm: Carol Service in Holton St. Mary

**Christmas Eve** 4.30pm: Carol Service in Higham  
11.30pm: Midnight Communion in Raydon

**Christmas Day** 10.00am: Family Communion Service in  
Holton St Mary  
10.00am: Family Communion Service in  
Stratford St Mary

**Sunday 26th December** Deanery Services of Holy Communion at  
St Stephen 8.00am (BCP) and 10.45am, both at  
**St Mary's Church in Hadleigh**

Sadly, Covid infections are rising again and our area is seeing very high infection rates. Being double-vaccinated does not offer full protection against catching Covid and you can still pass on the virus. Please respect that some people prefer to keep a distance and many wish to avoid physical contact such as shaking hands. We encourage you to wearing masks in church as many members of our congregations are very vulnerable.

**If you feel in any way unwell, or you have a cough, a temperature, a sore throat or a runny nose, even if you don't test positive for Covid, please stay at home until you feel better.**

## Family Hour Nativity in Stratford St Mary

Our annual Family Hour celebration of the Nativity Story will be in the parish room on **Sunday, 19<sup>th</sup> December**.

- 9.00 - 9.30 join us for a breakfast of croissants / fruit juice or hot drinks
- 9.30 - 10.00 Interactive Nativity - please come dressed as one of the characters from the Nativity story.
- join in as we re-tell the Good news of Jesus' birth
- stay for refreshments afterwards

Everyone is welcome to take part - our family hour time together is for the **whole** church family!



## Sunday Hangout in Higham

A Sunday church group that will meet at various points throughout the year, aimed primarily at children, but open to any age!

Sunday Hangout will be a time to create with others, a chance to learn something new and reflect on our faith.

Snacks and drinks will be provided.

The next 'Hangout' will be at St Mary's Church, Higham on:

• **20<sup>th</sup> February 2022 from 4 - 4.45pm**

Speak to Manette or Nicola to find out more!

## Monthly mid-week Communion service in Stratford St. Mary

A short contemporary service of Holy Communion in the Lady Chapel on 15<sup>th</sup> December at 10am.

## House Group

The Stratford St Mary House Group will not be meeting in December.



### **Lay Elders**

Our Benefice is fortunate to have the ministry of our Lay Elder Sandy. Lay Elders may do pastoral work and lead certain forms of worship. More information on Lay Elder ministry will follow early next year.

### **Benefice churches open**

All our churches in the benefice are open every day for private prayer and for visiting.



### **Light up our lives**

Christ, come into our world of darkness  
Light up our lives with your coming.  
Fulfil all our longings with the joy of your birth  
Strengthen our resolve to work for change in our world  
And to share the hope of your birth that each Advent brings.  
Amen.

*Sr Bridgetta Rooney/CAFOD*

**We pray for those who are in pain, distress and grief. May we hold the Christ light for them and be alongside them in their darkness. Please pray especially for those who have asked for our prayers:**

**Higham:** Amanda Berry, Val & Ian Boothman and Penny Watkins

**Stratford St. Mary:** Nancy Ablitt and Laura Kerry

**Outside our parishes:** Helen Gregory

For those who have died and all those who will be missed this Christmas. May they rest in peace and rise in glory, and may those who mourn them be comforted in their grief.

Please check on friends and neighbours who may be struggling as the nights draw in.

*If you wish to be added to our email mailing list to receive updates about what is going on in our benefice, please contact Rev'd Manette at: [revmcrossman@gmail.com](mailto:revmcrossman@gmail.com)*